

TECHNISCH BUREAU

DUSPRA



**SPITZNAS**

CUSTOMIZED POWER SOLUTIONS



# RECIPROCATING SAWS

TOOLS FOR THE SPECIALIST

PNEUMATIC



HYDRAULIC



ELECTRIC



ATEX



# SYSTEM CONCEPT



Saw blades for almost every type of material



Comfortable handle



Safety lever control with sensor block or safety twist throttle



Reciprocating saw with electric drive

ATEX-Safety class approved



Infinitely adjustable speed control



Adapter for various clamps



Exhaust guide 360° rotatable



## PNEUMATIC

Our favourite pneumatic reciprocating saws with ATEX approval for machine group I and II.



**PNEUMATIC**



**OPERATING PRESSURE**

6 Bar

**ATEX**



ORDER NO.	ATEX Specification	Housing material	Valve	Power	Number of strokes	Stroke length	Air consumption	Noise level LpA	Vibration level	Connection	Hose ID min.	Weight
				kW	rpm	mm	m <sup>3</sup> /min	dB(A)	m/s <sup>2</sup>			
<b>5 1212 0010</b>	II2GExhIIBT5Gb	Aluminium	Twist	1.1	360	60	1.45	76	<2.5	R 3/4" male	13	7.5
<b>5 1212 0050</b>	II2GExhIIBT5Gb	Aluminium	Lever	1.1	360	60	1.45	76	<2.5	R 3/4" male	13	7.0
<b>5 1213 0010</b>	IM2ExhIMbT5	Zamak	Twist	1.1	360	60	1.45	76	<2.5	R 3/4" male	13	10.6

Subject to technical change.

Performance data at an operating pressure of 6 bar.

## HYDRAULIC

Our hydraulic reciprocating saws with powerful drive and increased cutting speed for open circuit.



**HYDRAULIC**



**OPERATING PRESSURE**

140 Bar

**ATEX**



**UNDERWATER OPERATION**



ORDER NO.	ATEX Specification	Housing material	Valve	Power	Number of strokes	Stroke length	Volume flow	Noise level LpA	Vibration level	Connection	Hose ID min.	Weight
				kW	rpm	mm	l/min	dB(A)	m/s <sup>2</sup>			
<b>5 1220 0010</b>	II2GExhIIBT5Gb	Aluminium	Twist	2.8	300	60	10-50	≤70	<2.5	M18x1.5	12	10.5
<b>5 1220 0050</b>	II2GExhIIBT5Gb	Aluminium	Lever	2.8	300	60	10-50	≤70	<2.5	M18x1.5	12	10.5
<b>5 1223 0010</b>	IM2ExhIMbT5	Zamak	Twist	2.8	330	60	20-50	≤70	<2.5	M18x1.5	12	13.0
<b>5 1223 0050</b>	IM2ExhIMbT5	Zamak	Lever	2.8	330	60	20-50	≤70	<2.5	M18x1.5	12	13.0

Subject to technical change.

Performance data at an operating pressure of 140 bar.

## ELECTRIC

The cutting speed of these electrically driven radio suppressed reciprocating saws is infinitely adjustable, by which the saws are ideal for cutting plastics.



**ELECTRIC**



**OPERATING VOLTAGE**

110V / 230V

ORDER NO.	Housing material	Valve	Power	Rated voltage	Protection class	Degree of protection	Frequency	Number of strokes	Stroke length	Noise level LpA/LWA	Vibration level	Weight
			kW	V			Hz	rpm	mm	dB(A)	m/s <sup>2</sup>	kg
<b>5 1215 0050</b>	Aluminium	Button	1.2	230	II	IP20	50-60	60-500	60	80/91	3.0	7.5
<b>5 1215 0070</b>	Aluminium	Button	1.2	110	II	IP20	40-60	60-500	60	80/91	3.0	7.5

Subject to technical change.

# TECHNICAL DATA

# SYSTEM CONCEPT



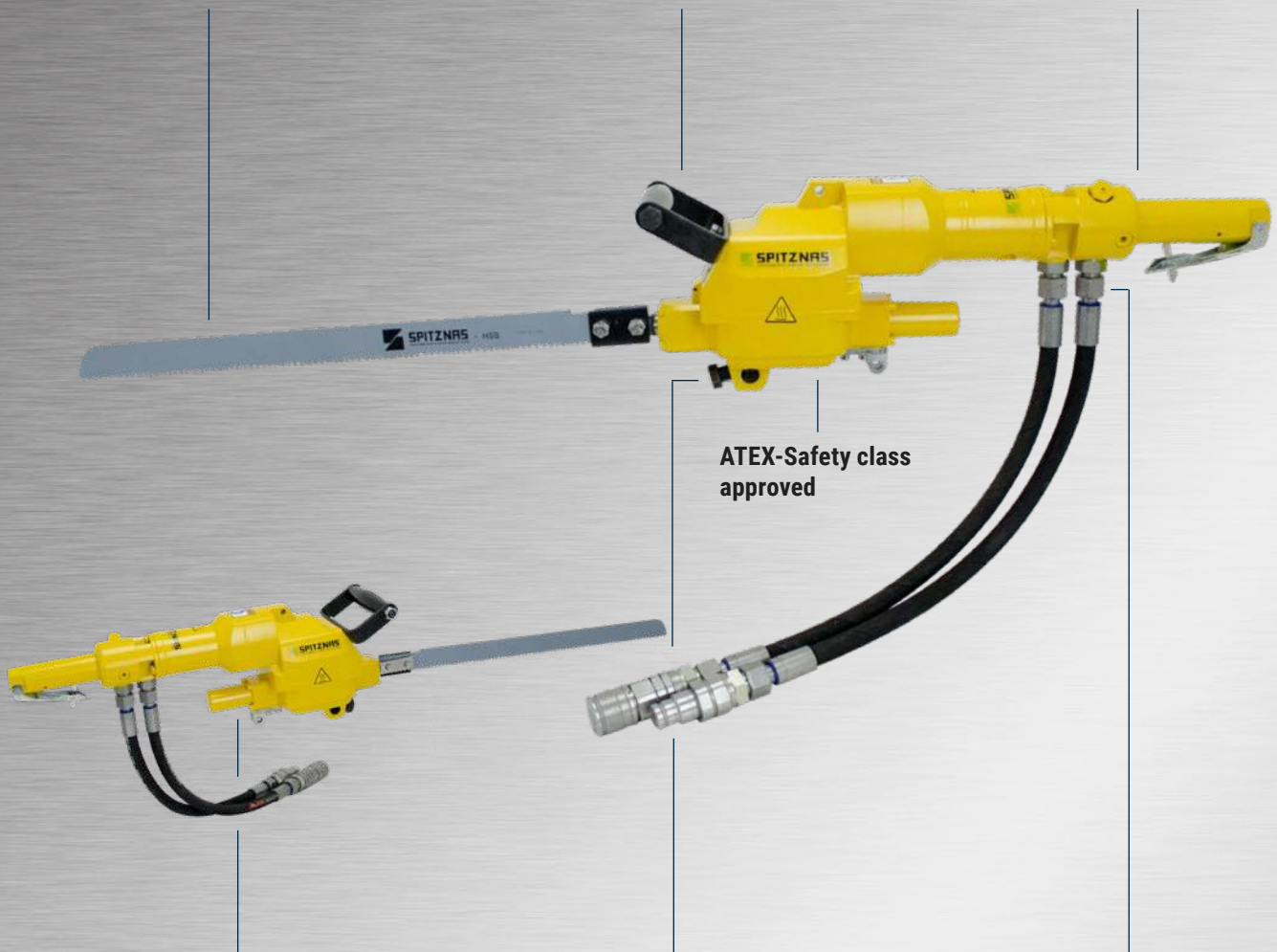
Saw blades for almost every type of material



Comfortable handle



Safety lever control or safety twist throttle



ATEX-Safety class approved

Enhanced bearings of the connection rod

Adapter for various clamps

Hydraulic connection



# HYDRAULIC

Our „Heavy-Duty“ hydraulic reciprocating saws for open circuit with enhanced bearings of the connection rod and special sealing for underwater operation.



ORDER NO.	ATEX Description	Housing material	Valve	HYDRAULIC		OPERATING PRESSURE 90-140 Bar			ATEX		UNDERWATER OPERATION		Weight
				Power	Number of strokes	Stroke length	Volume flow	Noise level LpA	Vibration level	Connection	Hose ID min.		
				kW	rpm	mm	l/min	dB(A)	m/s <sup>2</sup>			mm	kg
<b>5 1230 0010</b>	II2GExhIIBT5Gb	Aluminium	Twist	2.80	300	60	10-50	≤70.0	<2.5	M18x1.5	12	11.0	
<b>5 1230 0050</b>	II2GExhIIBT5Gb	Aluminium	Lever	2.80	300	60	10-50	≤70.0	<2.5	M18x1.5	12	11.0	

Subject to technical change.

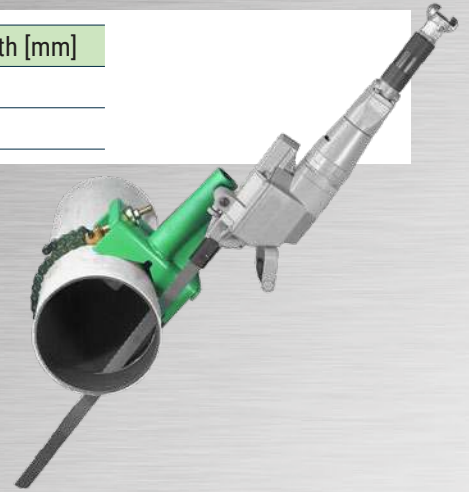
Performance data at an operating pressure of 140 bar.

# TECHNICAL DATA

# SYSTEM ACCESSORIES

## CLAMPS FOR PIPES

ORDER NO.	Description	For pipes up to [mm]	Min. saw blade length [mm]
5 1202 9960	Clamp for pipes	325	Pipe dia. + 130
5 1202 8940	Clamp for pipes	530	Pipe dia. + 130



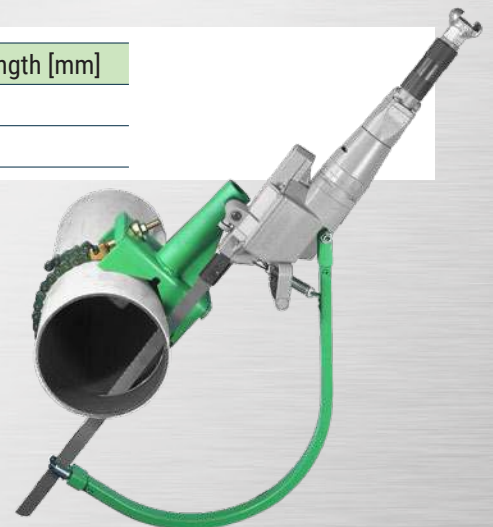
## BOW GUIDES

ORDER NO.	Description	For pipes up to [mm]	Min. saw blade length [mm]
5 1207 9970	Bow guide	325	500
5 1207 8910	Bow guide	530	700
5 1212 9970	Bow guide	600	900



## CLAMPS WITH BOW GUIDE

ORDER NO.	Description	For pipes up to [mm]	Min. saw blade length [mm]
5 1207 9930	Clamp with bow guide	325	500
5 1207 8930	Clamp with bow guide	530	700



## EXTENSION LINK CHAINS

Extension link chains for adjusting the clamp to bigger pipe diameters.

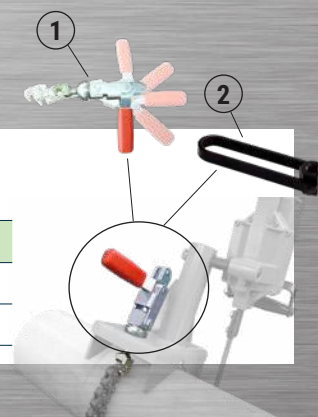
ORDER NO.	Description	Length [mm]
5 1201 9010	Extension link chain	500
5 1201 9030	Extension link chain	1000
5 1201 9020	Extension link chain	2000



## QUICK SPANNERS FOR CLAMPS

Spanner and quick spanners for fast and easy assembling of the clamp.

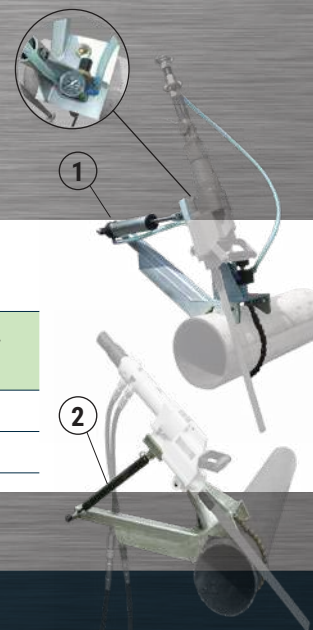
ORDER NO.	Pos.	Description	For pipes up to dia. [mm]
5 1202 9970	1	Quick clamp (1)	325
5 1207 8140	2	Tightener (2)	325



## AUTOMATIC POWER FEED CLAMPS FOR PIPES

Automatic power feed clamps with pneumatic cylinder or gas pressure spring (without air supply).

ORDER NO.	Pos.	Description	For pipes up to dia. [mm]
5 1208 9940	1	Clamp with automatic feed with pneumatic cylinder	530
5 1208 9990	2	Clamp with automatic feed with gas pressure spring	530



# SYSTEM ACCESSORIES

# SYSTEM ACCESSORIES

## CLAMPS FOR PROFILES

Clamps for profiles for rectangular cuts.

ORDER NO.	Description	Max. profile width [mm]
5 1202 8970	Clamp for profiles	290
5 1207 9940	Clamp for profiles	340



## CLAMPS FOR PIPES

Clamps for pipes, as well usable for profiles.

ORDER NO.	Description	For pipes up to dia. [mm]
5 1207 9910	Clamp for pipes	150
5 1212 9910	Clamp for pipes -reinforced type-	150



## CLAMP FOR UNDERGROUND ROOF SUPPORTS

Double pivot clamping device particularly for fixing the saw on clamps for underground roof supports.

ORDER NO.	Description
5 1208 9910	Double pivot clamping device



## CLAMP FOR UNDERGROUND ROOF SUPPORTS

Double-screw clamp particularly for fixing the saw on clamps for underground roof supports.

ORDER NO.	Description
5 1214 9000	Double-screw clamp





## MAGNETIC CLAMP

Magnetic clamp for mounting the saw on flat ferrous-metal surfaces.

ORDER NO.	Description
5 1213 9500	Magnetic clamp for mounting on flat surfaces



## DEVICE FOR MAGNETIC CLAMP

Device for the magnetic clamp for cutting with automatic feed with a gas spring.

ORDER NO.	Description
5 1213 9550	Device with gas pressure spring for magnetic clamp type 5 1213 9500



## CLAMP FOR PIPES

The clamp is used to fix the magnetic clamp type 5 1213 9500 on pipes.

ORDER NO.	Description
2 1330 8500	Clamp for pipes dia. 150 mm up to 500 mm for magnetic clamp
5 1201 9030*	Extension link chain for pipes up to dia. 800 mm
5 1201 9020*	Extension link chain for pipes up to dia. 1100 mm

\*2 pieces are needed for one clamp



## ADAPTER

Adapter for off-center cutting.

ORDER NO.	Description
5 1212 9200	Adapter for off-center cutting



# SYSTEM ACCESSORIES

# SYSTEM ACCESSORIES

## SAW BLADES HSS

All SPITZNAS saw blades cut on backward stroke.  
Length of blade = max. cross-section + 130 mm.  
Other lengths and tooth pitches on request.

MATERIAL  
HSS-STEEL

QUALITY CLASS  
STANDARD



ORDER NO.	Teeth per inch	Length [mm]	Width [mm]	Height [mm]	Plastic	GRP-Pipe	Hardboard	Asbestos cement	Concrete reinforced	Brick	Aluminium (solid material)	Cast iron	Ductile iron (cement coated iron)	Cast iron pipe (tar coated)	Steel (solid material)	Reinforcing bar	Non-ferrous metal (non-precious)	Non-ferrous metal (precious)	Stainless steel	Rust-resistant steel	High stress steel (<600 N/mm <sup>2</sup> )	
9 2501 0590	4	300	1.5	25	x			x			x											
9 2501 0700	4	530	2.0	28	x			x			x											
9 2501 0050	6	200	1.5	25	x			x			x											
9 2501 0120	6	300	1.5	25	x			x			x											
9 2501 0190	6	400	1.5	25	x			x			x											
9 2501 0230	6	500	2.0	28	x			x			x											
9 2501 0470	6-8	600	2.0	28	x			x			x	x			x		x	x	x	x	x	
9 2501 0310	6	770	2.0	28	x			x			x											
9 2501 0630	8	200	1.5	25	x		x					x			x			x				
9 2501 0760	8	300	1.5	25	x		x					x			x			x				
9 2501 0660	8	400	1.5	25	x		x					x			x			x				
9 2501 0770	8	500	1.5	25	x						x	x			x		x	x	x	x	x	
9 2501 0710	8	600	2.0	28	x							x			x			x				
9 2501 0440	12	200	2.0	28	x		x					x			x			x				
9 2501 0130	12	300	1.5	25	x		x					x			x			x				
9 2501 0200	12	400	1.5	25	x		x					x			x			x				
9 2501 0450	12	500	2.0	28	x		x					x			x			x				
9 2501 0670	12	530	1.5	25	x		x					x			x			x				
9 2501 0720	12	770	2.0	28	x		x					x			x			x				
9 2501 0690	12	940	2.0	28	x		x					x			x			x				
9 2501 0020	14	150	1.5	25														x			x	x
9 2501 0060	14	200	1.5	25														x			x	x
9 2501 0070	14	250	1.5	25														x			x	x
9 2501 0140	14	300	1.5	25														x			x	x
9 2501 0210	14	400	1.5	25														x			x	x
9 2501 0240	14	500	2.0	28														x			x	x
9 2501 0460	14	600	2.0	28														x			x	x
9 2501 0300	14	770	2.0	28							x <sup>1)</sup>	x			x		x <sup>1)</sup>	x <sup>1)</sup>	x	x		
9 2501 0640	16	200	1.5	25														x			x	x
9 2501 0610	16	300	1.5	25														x			x	x
9 2501 0620	16	400	1.5	25														x			x	x

<sup>1)</sup>thin wall thickness

## SAW BLADES HSS-SL

All SPITZNAS saw blades cut on backward stroke.  
Length of blade = max. cross-section + 130 mm.  
Other lengths and tooth pitches on request.

MATERIAL  
HSS-SL-STEEL

QUALITY CLASS  
HIGH



ORDER NO.	Teeth per inch	Length [mm]	Width [mm]	Height [mm]	Plastic	GRP-Pipe	Hardboard	Asbestos cement	Concrete reinforced	Brick	Aluminium (solid material)	Cast iron	Ductile iron (cement coated iron)	Cast iron pipe (tar coated)	Steel (solid material)	Reinforcing bar	Non-ferrous metal (non-precious)	Non-ferrous metal (precious)	Stainless steel	Rust-resistant steel	High stress steel (<600 N/mm <sup>2</sup> )
9 2501 0740	6	770	2.0	28	x		x					x			x			x	x		x
9 2501 0680	12	530	2.0	28	x		x					x			x			x	x		x
9 2501 0730	12	770	2.0	28	x		x					x			x			x	x		x
9 2501 0320	16	150	1.5	25													x		x	x	x
9 2501 0330	16	200	1.5	25													x		x	x	x
9 2501 0340	16	250	1.5	25													x		x	x	x
9 2501 0350	16	300	1.5	25													x		x	x	x
9 2501 0600	16	350	1.5	25													x		x	x	x
9 2501 0360	16	400	1.5	25													x		x	x	x
9 2501 0370	16	500	2.0	28													x		x	x	x
9 2501 0550	16	600	2.0	28													x		x	x	x
9 2501 0380	16	770	2.0	28													x		x	x	x
9 2501 0750	16	940	2.0	28													x		x	x	x

## SAW BLADES HSS-BIMETAL

All SPITZNAS saw blades cut on backward stroke.  
Length of blade = max. cross-section + 130 mm.  
Other lengths and tooth pitches on request.

MATERIAL  
HSS-BIMETAL

QUALITY CLASS  
HIGH



ORDER NO.	Teeth per inch	Length [mm]	Width [mm]	Height [mm]	Plastic	GRP-Pipe	Hardboard	Asbestos cement	Concrete reinforced	Brick	Aluminium (solid material)	Cast iron	Ductile iron (cement coated iron)	Cast iron pipe (tar coated)	Steel (solid material)	Reinforcing bar	Non-ferrous metal (non-precious)	Non-ferrous metal (precious)	Stainless steel	Rust-resistant steel	High stress steel (<600 N/mm <sup>2</sup> )
9 2501 1010	6	200	2.25	45	x							x									
9 2501 0900	6	300	2.25	45	x							x									
9 2501 0910	6	400	2.25	45	x							x									
9 2501 0920	6	500	2.25	45	x							x									
9 2501 0930	6	600	2.25	45	x							x									
9 2501 0940	6	700	2.25	45	x							x									
9 2501 0950	6	770	2.25	45	x							x									
9 2501 1110	14	200	2.25	45								x			x						
9 2501 1120	14	300	2.25	45								x			x						
9 2501 0960	14	400	2.25	45								x			x						
9 2501 0890	14	500	2.25	45								x			x						
9 2501 0970	14	600	2.25	45								x			x						
9 2501 1130	14	700	2.25	45								x			x						
9 2501 1140	14	770	2.25	45								x			x						

# SYSTEM ACCESSORIES

# SYSTEM ACCESSORIES

## SAW BLADES „FAST-CUT“ HSS

All SPITZNAS saw blades cut on backward stroke.  
Length of blade = max. cross-section + 130 mm.  
Other lengths and tooth pitches on request.

MATERIAL  
HSS-STEEL

QUALITY CLASS  
HIGH



ORDER NO.	Teeth per inch	Length [mm]	Width [mm]	Height [mm]	Plastic	GRP-Pipe	Hardboard	Asbestos cement	Concrete reinforced	Brick	Aluminium (solid material)	Cast iron	Ductile iron (cement coated iron)	Cast iron pipe (tar coated)	Steel (solid material)	Reinforcing bar	Non-ferrous metal (non-precious)	Non-ferrous metal (precious)	Stainless steel	Rust-resistant steel	High stress steel (<600 N/mm <sup>2</sup> )	
9 2509 0010	8	470	2.0	28	x						x	x			x		x	x	x	x	x	
9 2509 0020	8	570	2.0	28	x						x	x			x		x	x	x	x	x	
9 2509 0030	8	670	2.0	28	x						x	x			x		x	x	x	x	x	
9 2509 0040	8	770	2.0	28	x						x	x			x		x	x	x	x	x	
9 2509 0160	6-8	470	2.0	28	x						x	x			x		x	x	x	x	x	
9 2509 0170	6-8	570	2.0	28	x						x	x			x		x	x	x	x	x	
9 2509 0180	6-8	670	2.0	28	x						x	x			x		x	x	x	x	x	
9 2509 0190	6-8	770	2.0	28	x						x	x			x		x	x	x	x	x	
9 2509 0310	14	470	2.0	28							x <sup>1)</sup>	x			x		x <sup>1)</sup>	x <sup>1)</sup>	x	x		
9 2509 0320	14	570	2.0	28							x <sup>1)</sup>	x			x		x <sup>1)</sup>	x <sup>1)</sup>	x	x		
9 2509 0330	14	670	2.0	28							x <sup>1)</sup>	x			x		x <sup>1)</sup>	x <sup>1)</sup>	x	x		
9 2509 0340	14	770	2.0	28							x <sup>1)</sup>	x			x		x <sup>1)</sup>	x <sup>1)</sup>	x	x		

<sup>1)</sup>thin wall thickness

## SAW BLADES „FAST-CUT“ HSS-SL

All SPITZNAS saw blades cut on backward stroke.  
Length of blade = max. cross-section + 130 mm.  
Other lengths and tooth pitches on request.

MATERIAL  
HSS-SL-STEEL

QUALITY CLASS  
HIGH



ORDER NO.	Teeth per inch	Length [mm]	Width [mm]	Height [mm]	Plastic	GRP-Pipe	Hardboard	Asbestos cement	Concrete reinforced	Brick	Aluminium (solid material)	Cast iron	Ductile iron (cement coated iron)	Cast iron pipe (tar coated)	Steel (solid material)	Reinforcing bar	Non-ferrous metal (non-precious)	Non-ferrous metal (precious)	Stainless steel	Rust-resistant steel	High stress steel (<600 N/mm <sup>2</sup> )	
9 2509 0510	8	470	2.0	28	x						x	x			x		x	x	x	x	x	
9 2509 0520	8	570	2.0	28	x						x	x			x		x	x	x	x	x	
9 2509 0530	8	670	2.0	28	x						x	x			x		x	x	x	x	x	
9 2509 0540	8	770	2.0	28	x						x	x			x		x	x	x	x	x	
9 2509 0660	6-8	470	2.0	28	x						x	x			x		x	x	x	x	x	
9 2509 0670	6-8	570	2.0	28	x						x	x			x		x	x	x	x	x	
9 2509 0680	6-8	670	2.0	28	x						x	x			x		x	x	x	x	x	
9 2509 0690	6-8	770	2.0	28	x						x	x			x		x	x	x	x	x	
9 2509 0810	14	470	2.0	28							x <sup>1)</sup>	x			x		x <sup>1)</sup>	x <sup>1)</sup>	x	x		
9 2509 0820	14	570	2.0	28							x <sup>1)</sup>	x			x		x <sup>1)</sup>	x <sup>1)</sup>	x	x		
9 2509 0830	14	670	2.0	28							x <sup>1)</sup>	x			x		x <sup>1)</sup>	x <sup>1)</sup>	x	x		
9 2509 0840	14	770	2.0	28							x <sup>1)</sup>	x			x		x <sup>1)</sup>	x <sup>1)</sup>	x	x		

<sup>1)</sup>thin wall thickness

## SAW BLADES HSS-BIMETAL-VP7

All SPITZNAS saw blades cut on backward stroke.  
Length of blade = max. cross-section + 130 mm.  
Other lengths and tooth pitches on request.

MATERIAL  
**HSS-BIMETAL-VP7**

QUALITY CLASS  
**HIGHEST**



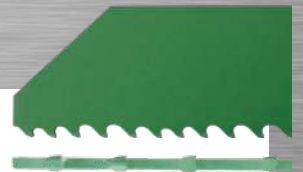
ORDER NO.	Teeth per inch	Length [mm]	Width [mm]	Height [mm]	Plastic	GRP-Pipe	Hardboard	Asbestos cement	Concrete reinforced	Brick	Aluminium (solid material)	Cast iron	Ductile iron (cement coated iron)	Cast iron pipe (tar coated)	Steel (solid material)	Reinforcing bar	Non-ferrous metal (non-precious)	Non-ferrous metal (precious)	Stainless steel	Rust-resistant steel	High stress steel (<600 N/mm <sup>2</sup> )	
9 2504 0710	3-4	500	2.0	28	x		x				x				x	x	x	x	x	x	x	x
9 2504 0720	3-4	600	2.0	28	x		x				x				x	x	x	x	x	x	x	x
9 2504 0730	3-4	770	2.0	28	x		x				x				x	x	x	x	x	x	x	x
9 2504 0560	4-7	500	2.0	28	x		x				x				x	x	x	x	x	x	x	x
9 2504 0570	4-7	600	2.0	28	x		x				x				x	x	x	x	x	x	x	x
9 2504 0580	4-7	770	2.0	28	x		x				x				x	x	x	x	x	x	x	x

## SAW BLADES CARBIDE-TIPPED

All SPITZNAS saw blades cut on backward stroke.  
Length of blade = max. cross-section + 130 mm.  
Other lengths and tooth pitches on request.

MATERIAL  
**CARBIDE-TIPPED**

QUALITY CLASS  
**HIGHEST**



ORDER NO.	Teeth per inch	Length [mm]	Width [mm]	Height [mm]	Plastic	GRP-Pipe	Hardboard	Asbestos cement	Concrete reinforced	Brick	Aluminium (solid material)	Cast iron	Ductile iron (cement coated iron)	Cast iron pipe (tar coated)	Steel (solid material)	Reinforcing bar	Non-ferrous metal (non-precious)	Non-ferrous metal (precious)	Stainless steel	Rust-resistant steel	High stress steel (<600 N/mm <sup>2</sup> )	
9 2504 0460	3	630	1.6	54	x						x				x	x	x		x	x	x	x
9 2504 0480	3	500	1.6	54	x						x				x	x	x		x	x	x	x
9 2504 0470	3	770	1.6	54	x						x				x	x	x		x	x	x	x

# SYSTEM ACCESSORIES



## SAW BLADES CARBIDE-TIPPED

All SPITZNAS saw blades cut on backward stroke.  
 Length of blade = max. cross-section + 130 mm.  
 Other lengths and tooth pitches on request.

MATERIAL  
**CARBIDE-TIPPED**

QUALITY CLASS  
**HIGHEST**



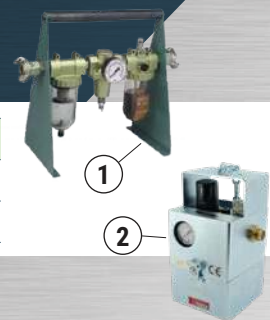
ORDER NO.	Teeth per inch	Length [mm]	Width [mm]	Height [mm]	Plastic	GRP-Pipe	Hardboard	Asbestos cement	Concrete reinforced	Brick	Aluminium (solid material)	Cast iron	Ductile iron (cement coated iron)	Cast iron pipe (tar coated)	Steel (solid material)	Reinforcing bar	Non-ferrous metal (non-precious)	Non-ferrous metal (precious)	Stainless steel	Rust-resistant steel	High stress steel (<600 N/mm <sup>2</sup> )	
<b>9 2504 0610</b>	4	300	1.8	50		x		x	x	x		x	x	x								
<b>9 2504 0620</b>	4	400	1.8	50		x		x	x	x		x	x	x								
<b>9 2504 0630</b>	4	500	1.8	50		x		x	x	x		x	x	x								
<b>9 2504 0640</b>	4	600	1.8	50		x		x	x	x		x	x	x								
<b>9 2504 0650</b>	4	770	1.8	50		x		x	x	x		x	x	x								

# SYSTEM ACCESSORIES

# SYSTEM ACCESSORIES

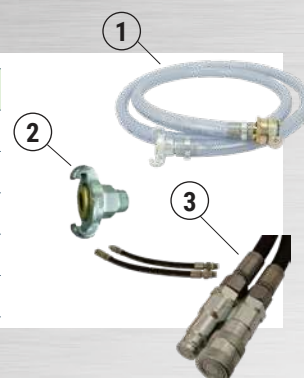
## SERVICE UNITS

ORDER NO.	Pos.	Description
9 2406 0260	1	Portable service unit with pressure regulator 3/4"
9 2406 0650	2	Portable service unit with protection housing and pressure regulator 3/4"



## HOSES AND FITTINGS

ORDER NO.	Pos.	Description
9 3610 0410	1	Pneumatic pressure hose ID 13 mm, 2.5 m length, screw-on claw coupling
9 3610 0420	1	Pneumatic pressure hose ID 16 mm, 2.5 m length, screw-on claw coupling
9 3610 0430	1	Pneumatic pressure hose ID 19 mm, 2.5 m length, screw-on claw coupling
9 2102 0020	2	Claw coupling, metal sealing, 3/4" ID
2 1317 9010	3	Hydraulic pressure hose set for type 5 1220 and 5 1230



## MISCELLANEOUS ACCESSORIES

ORDER NO.	Pos.	Description	For type
2 2406 9900	1	Safety block (inlet pressure up to 350 bar, max. 50 l/min)	5 1220, 5 1223
9 9910 0080	2	Carrying case	5 1212
5 1212 9000	2	Carrying case	5 1215, 5 1220, 5 1230
9 9902 0120	3	Multi oil for cleaning and protection	



More accessories on request.

## SAW RANGE

### BAND SAWS



### SABRE SAWS



### CHAIN SAWS



### RECIPROCATING SAWS



### CIRCULAR SAWS



### PIPE CUTTING MACHINES



1120E