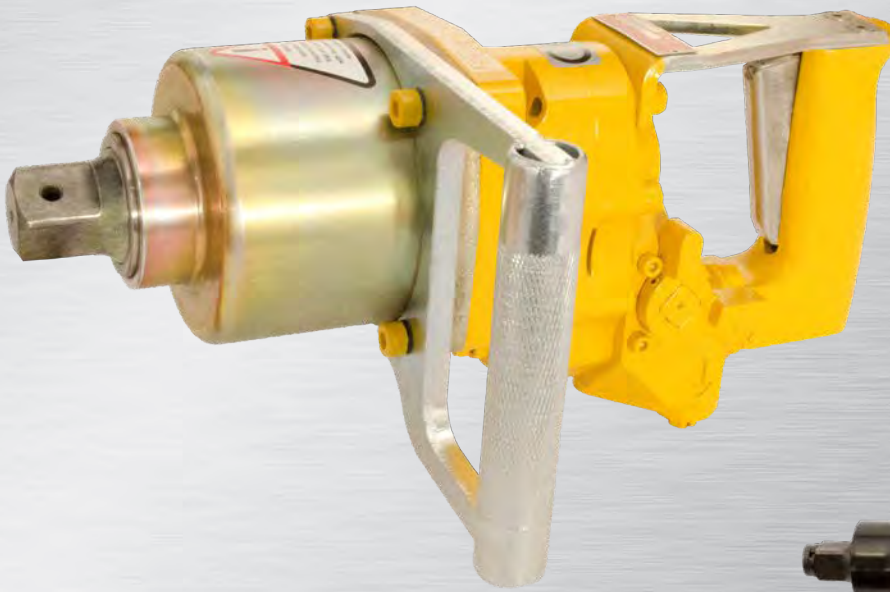


TECHNISCH BUREAU

DUSPRA



SPITZNAS
CUSTOMIZED POWER SOLUTIONS



IMPACT WRENCHES

TOOLS FOR THE SPECIALIST



PNEUMATIC



HYDRAULIC



ATEX



SYSTEM CONCEPT



Square drive



Torque adjustment



Rotation direction reversible



ATEX-Safets class
approved



Push button actuation

Air inlet and exhaust

Underwater type with additional
exhaust connection



PNEUMATIC

Our handy pneumatic impact wrenches with little weight.



Typ 6 1034/6 1035



Typ 6 1037

ORDER NO.	ATEX Description	Square drive	DRUCKLUFT		BETRIEBSDRUCK 6 Bar		ATEX		Vibration level	Weight
			for screws up to	Max. tightening torque* (hard screw case)	Air consumption	Distance centre/outer edge	Hose ID	Noise level LpA		
			mm	Nm	m ³ /min	mm	mm	dB(A)	m/s ²	kg
6 1034 0010	II2GExhIIBT6Gb	1/2"	M20	610	0.32	47.5	10	90.0	2.6	2.5
6 1035 0010	IM2ExhIMbT6	1/2"	M20	610	0.32	47.5	10	90.0	2.6	3.6
6 1037 0010	II2GExhIIBT6Gb	1/2"	M20	949	0.14	30.0	10	94.3	7.2	1.4

Subject to technical change. *applying on screw strength class 8.8 Performance data at an operating pressure of 6 bar.

PNEUMATIC

Our powerful pneumatic impact wrenches with slim design.



ORDER NO.	ATEX Description	Square drive	PNEUMATIC		OPERATING PRESSURE 6 Bar		ATEX		Vibration level	Weight
			for screws up to	Max. tightening torque* (hard screw case)	Air consumption	Distance centre/outer edge	Hose ID	Noise level LpA		
			mm	Nm	m ³ /min	mm	mm	dB(A)	m/s ²	kg
6 1316 0010	IM2ExhIMbT6	1"	M30	1,350	1.40	45.0	13	96.0	4.5	6.5
6 1316 0020	IM2ExhIMbT6	3/4"	M30	1,350	1.40	45.0	13	96.0	4.5	6.4
6 1316 0050	II2GExhIIBT6Gb	3/4"	M30	1,350	1.40	45.0	13	96.0	4.5	5.6
6 1316 0040	II2GExhIIBT6Gb	1"	M30	1,350	1.40	45.0	13	96.0	4.5	5.7

Subject to technical change. *applying on screw strength class 8.8 Performance data at an operating pressure of 6 bar.

PNEUMATIC

Our specially designed pneumatic impact wrenches for underwater use.



ORDER NO.	ATEX Description	Square drive	PNEUMATIC		OPERATING PRESSURE 6 Bar		ATEX		UNDERWATER OPERATION	
			for screws up to	Max. tightening torque* (hard screw case)	Air consumption	Distance centre/outer edge	Hose ID	Noise level LpA	Vibration level	Weight
			mm	Nm	m ³ /min	mm	mm	dB(A)	m/s ²	kg
6 1316 0070	II2GExhIIBT6Gb	3/4"	M30	1,350	1.40	45.0	13	96.0	4.5	5.6
6 1316 0060	II2GExhIIBT6Gb	1"	M30	1,350	1.40	45.0	13	96.0	4.5	5.7

Subject to technical change. *applying on screw strength class 8.8 Performance data at an operating pressure of 6 bar.

TECHNICAL DATA

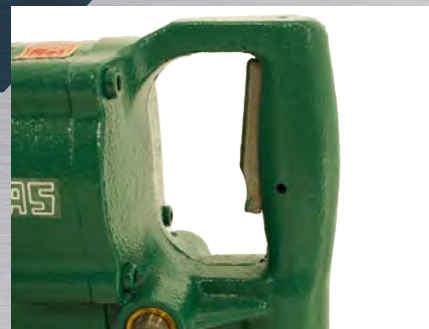
SYSTEM CONCEPT



Square drive



Impact mechanism



D-Handle

ATEX-Safety class
approved



Rotation direction reversible

Second handle



Air connection



PNEUMATIC

Our most powerful 3/4" pneumatic impact wrench, usable in ATEX area of equipment group I.





ORDER NO.	ATEX Description	Square drive	for screws up to	Max. tightening torque* (hard screw case)	Air consumption	Distance centre/outer edge	PNEUMATIC 		OPERATING PRESSURE 6 Bar		ATEX 	
							Hose ID	Noise level LpA	Vibration level	Weight		
		mm	Nm	m ³ /min	mm	mm	mm	dB(A)	m/s ²	kg		
6 1312 0010	IM2ExhIMbT6	3/4"	M33	1,800	1.10	49.0	13	92.0	3.2	9.0		
Subject to technical change.		*applying on screw strength class 8.8			Performance data at an operating pressure of 6 bar.							

PNEUMATIC

Our most powerful 1" pneumatic impact wrench, usable in ATEX area of equipment group I and II.





ORDER NO.	ATEX Description	Square drive	for screws up to	Max. tightening torque* (hard screw case)	Air consumption	Distance centre/outer edge	PNEUMATIC 		OPERATING PRESSURE 6 Bar		ATEX 	
							Hose ID	Noise level LpA	Vibration level	Weight		
		mm	Nm	m ³ /min	mm	mm	mm	dB(A)	m/s ²	kg		
6 1412 0010	IM2ExhIMbT6	1"	M33	1,800	1.10	49.0	13	92.0	3.2	9.0		
6 1410 0010	II2GExhIIBT6Gb	1"	M36	2,200	1.60	57.0	13	92.0	6.2	11.0		
6 1411 0010	IM2ExhIMbT6	1"	M36	2,200	1.60	57.0	13	92.0	6.2	13.5		
Subject to technical change.		*applying on screw strength class 8.8			Performance data at an operating pressure of 6 bar.							

PNEUMATIC

Our most powerful 1 1/2" pneumatic impact wrench, usable in ATEX area of equipment group I and II.



ORDER NO.	ATEX Description	Square drive	for screws up to	Max. tightening torque* (hard screw case)	Air consumption	Distance centre/outer edge	PNEUMATIC 		OPERATING PRESSURE 6 Bar		ATEX 	
							Hose ID	Noise level LpA	Vibration level	Weight		
		mm	Nm	m ³ /min	mm	mm	mm	dB(A)	m/s ²	kg		
6 1417 0040	II2GExhIIBT6Gb	1 1/2"	M56	4,400	1.60	57.0	15	107.0	6.6	12.2		
6 1511 0010	IM2ExhIMbT6	1 1/2"	M56	4,400	1.60	57.0	15	92.0	5.5	14.9		
Subject to technical change.		*applying on screw strength class 8.8			Performance data at an operating pressure of 6 bar.							

TECHNICAL DATA

SYSTEM CONCEPT



Square drive



Second handle



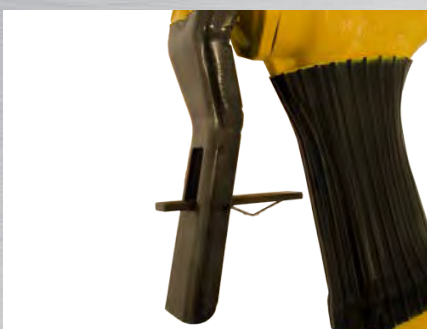
Rotation direction reversible



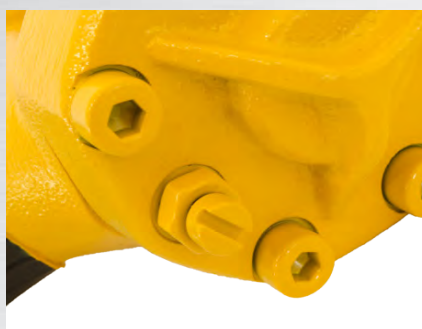
ATEX-Safety class approved



Latch with locking device



Torque adjustable



Hose couplings



HYDRAULIC



Our hydraulic impact wrenches for the **open hydraulic circuit**.

ORDER NO.	ATEX Description	Square drive	for screws up to	Max. torque* (adjustable)	Volume flow	Distance centre/outer edge	HYDRAULIC		OPERATING PRESSURE 140 Bar		ATEX	
							mm	Nm	l/min	mm	dB(A)	m/s ²
6 1518 0010	IM2ExhIMbT5	3/4"	M30	350-1,700	20-40	45.0	STECKO-10	85.3	3.8	9.0		
6 1519 0010	IM2ExhIMbT5	1"	M30	350-1,700	20-40	45.0	STECKO-10	85.3	3.8	9.0		

Subject to technical change. *applying on screw strength class 8.8 Performance data at an operating pressure of 140 bar.

HYDRAULIC



Our hydraulic impact wrenches for the **open hydraulic circuit**, also usable for underwater operation. Delivery includes the hydraulic hose set.

ORDER NO.	ATEX Description	Square drive	for screws up to	Max. torque* (adjustable)	Volume flow	Distance centre/outer edge	HYDRAULIC		OPERATING PRESSURE 140 Bar		ATEX		UNDERWATER OPERATION	
							mm	Nm	l/min	mm	dB(A)	m/s ²	kg	
6 1515 0010	II2GExhIIBT5Gb	3/4"	M30	350-1,700	20-40	45.0	M18x1.5	85.3	3.8	7.3				
6 1514 0010	II2GExhIIBT5Gb	1"	M30	350-1,700	20-40	45.0	M18x1.5	85.3	3.8	7.3				

Subject to technical change. *applying on screw strength class 8.8 Performance data at an operating pressure of 140 bar.

HYDRAULIC



Our most powerful hydraulic impact wrench for the **open hydraulic circuit**, also usable for underwater operation.

ORDER NO.	ATEX Description	Square drive	for screws up to	Max. torque* (adjustable)	Volume flow	Distance centre/outer edge	HYDRAULIC		OPERATING PRESSURE 140 Bar		ATEX		UNDERWATER OPERATION	
							mm	Nm	l/min	mm	dB(A)	m/s ²	kg	
6 1520 0010	II2GExhIIBT5Gb	1"	M36	850-2,500	25-45	60.0	3/4"-16UNF-2B	99.2	6.75	10.7				

Subject to technical change. *applying on screw strength class 8.8 Performance data at an operating pressure of 140 bar.

HYDRAULIC



Our hydraulic impact wrenches for the **closed hydraulic circuit**, also usable for HFA-Emulsion.

Max. operating pressure: 260 bar - Hydraulic oil
300 bar - HFA-Emulsion

ORDER NO.	ATEX Description	Square drive	for screws up to	Max. torque* (adjustable)	Volume flow Oil/HFA	Distance centre/outer edge	HYDRAULIC		OPERATING PRESSURE 260/300 Bar		ATEX	
							mm	Nm	l/min	mm	dB(A)	m/s ²
6 1516 0010	IM2ExhIMbT5	3/4"	M30	350-1,700	9.5/12.0	52.5	STECKO-10	94.5	10.9	7.4		
6 1517 0010	IM2ExhIMbT5	1"	M39	550-3,400	9.5/12.0	52.5	STECKO-10	102.0	14.0	9.3		

Subject to technical change. *applying on screw strength class 8.8 Performance data at max. operating pressure.

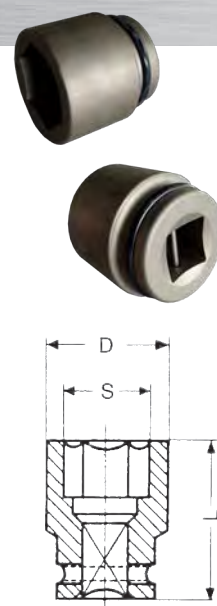
TECHNICAL DATA

SYSTEM ACCESSORIES

HEXAGON SOCKETS, STANDARD LENGTH

The hexagon sockets according to DIN 3129/ISO 2725 are made of super chrome-vanadium-steel, are phosphated and will be supplied with snap ring and pin.

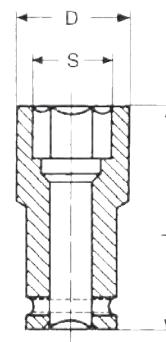
ORDER NO.	Description	Square drive	S	L	D
			mm	mm	mm
9 1408 1290	Hexagon socket, standard length	1/2"	8	40	15
9 1408 1310	Hexagon socket, standard length	1/2"	10	40	17
9 1408 1320	Hexagon socket, standard length	1/2"	13	40	21
9 1408 0110	Hexagon socket, standard length	1/2"	14	40	23
9 1408 0120	Hexagon socket, standard length	1/2"	17	40	26
9 1408 0130	Hexagon socket, standard length	1/2"	19	40	28.5
9 1408 0140	Hexagon socket, standard length	1/2"	22	40	32.5
9 1408 0150	Hexagon socket, standard length	1/2"	24	45	35
9 1408 0160	Hexagon socket, standard length	1/2"	27	50	38
9 1408 0170	Hexagon socket, standard length	1/2"	30	50	42
9 1408 0390	Hexagon socket, standard length	3/4"	17	50	31
9 1408 0400	Hexagon socket, standard length	3/4"	19	50	33.5
9 1408 0410	Hexagon socket, standard length	3/4"	22	50	37
9 1408 0420	Hexagon socket, standard length	3/4"	24	50	40
9 1408 0430	Hexagon socket, standard length	3/4"	27	53	43.5
9 1408 0440	Hexagon socket, standard length	3/4"	30	53	47
9 1408 0450	Hexagon socket, standard length	3/4"	32	57	50
9 1408 0460	Hexagon socket, standard length	3/4"	36	56	52
9 1408 0470	Hexagon socket, standard length	3/4"	41	58	61.5
9 1408 0480	Hexagon socket, standard length	3/4"	46	64	63
9 1408 0580	Hexagon socket, standard length	1"	24	55	42.5
9 1408 0590	Hexagon socket, standard length	1"	27	55	46
9 1408 0600	Hexagon socket, standard length	1"	30	57	50
9 1408 0610	Hexagon socket, standard length	1"	32	57	52
9 1408 0620	Hexagon socket, standard length	1"	36	60	55
9 1408 0630	Hexagon socket, standard length	1"	41	64	64
9 1408 0640	Hexagon socket, standard length	1"	46	69	70
9 1408 0650	Hexagon socket, standard length	1"	50	72	73
9 1408 0660	Hexagon socket, standard length	1"	55	76	82
9 1408 0670	Hexagon socket, standard length	1"	60	82	86
9 1408 0680	Hexagon socket, standard length	1"	65	85	92
9 1408 0790	Hexagon socket, standard length	1 1/2"	41	80	70
9 1408 0800	Hexagon socket, standard length	1 1/2"	46	84	75
9 1408 0810	Hexagon socket, standard length	1 1/2"	50	87	81
9 1408 0820	Hexagon socket, standard length	1 1/2"	55	90	86
9 1408 0830	Hexagon socket, standard length	1 1/2"	60	90	93
9 1408 0840	Hexagon socket, standard length	1 1/2"	65	90	100
9 1408 0850	Hexagon socket, standard length	1 1/2"	70	100	105
9 1408 0860	Hexagon socket, standard length	1 1/2"	75	105	110
9 1408 0870	Hexagon socket, standard length	1 1/2"	80	110	119
9 1408 0880	Hexagon socket, standard length	1 1/2"	85	117	125



HEXAGON SOCKETS, EXTRA LONG

The hexagon sockets according to DIN 3129/ISO 2725 are made of super chrome-vanadium-steel, are phosphated and will be supplied with snap ring and pin.

ORDER NO.	Description	Square drive	S	L	D
			mm	mm	mm
9 1408 0190	Hexagon socket, extra long	1/2"	14	80	21
9 1408 0200	Hexagon socket, extra long	1/2"	17	80	24
9 1408 0210	Hexagon socket, extra long	1/2"	19	80	26
9 1408 0220	Hexagon socket, extra long	1/2"	22	80	30
9 1408 0230	Hexagon socket, extra long	1/2"	24	80	32
9 1408 0240	Hexagon socket, extra long	1/2"	27	80	36.5
9 1408 0510	Hexagon socket, extra long	3/4"	22	95	38
9 1408 0520	Hexagon socket, extra long	3/4"	24	95	40
9 1408 0530	Hexagon socket, extra long	3/4"	27	95	43
9 1408 0540	Hexagon socket, extra long	3/4"	30	95	47
9 1408 0550	Hexagon socket, extra long	3/4"	32	95	49
9 1408 0560	Hexagon socket, extra long	3/4"	36	95	54
9 1408 0690	Hexagon socket, extra long	1"	24	100	42
9 1408 0700	Hexagon socket, extra long	1"	27	100	46
9 1408 0710	Hexagon socket, extra long	1"	30	100	50
9 1408 0720	Hexagon socket, extra long	1"	32	100	51
9 1408 0730	Hexagon socket, extra long	1"	36	100	54
9 1408 0740	Hexagon socket, extra long	1"	41	100	63
9 1408 0750	Hexagon socket, extra long	1"	46	100	70
9 1408 0760	Hexagon socket, extra long	1"	50	110	75
9 1408 0770	Hexagon socket, extra long	1"	55	112	80
9 1408 0780	Hexagon socket, extra long	1"	60	114	85
9 1408 0940	Hexagon socket, extra long	1 1/2"	41	115	70
9 1408 0950	Hexagon socket, extra long	1 1/2"	46	115	77
9 1408 0960	Hexagon socket, extra long	1 1/2"	50	135	82
9 1408 0970	Hexagon socket, extra long	1 1/2"	55	140	88
9 1408 0980	Hexagon socket, extra long	1 1/2"	60	150	94
9 1408 0990	Hexagon socket, extra long	1 1/2"	65	150	101
9 1408 1000	Hexagon socket, extra long	1 1/2"	70	160	107
9 1408 1010	Hexagon socket, extra long	1 1/2"	75	170	113
9 1408 1020	Hexagon socket, extra long	1 1/2"	80	170	120
9 1408 1030	Hexagon socket, extra long	1 1/2"	85	170	126

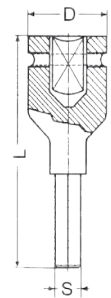


SYSTEM ACCESSORIES

SYSTEM ACCESSORIES

HEXAGON SOCKETS FOR ALLEN HEAD SCREWS

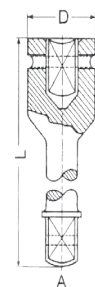
The hexagon sockets for allen head screws according to DIN 3129/ISO 2725 are made of super chrome-vanadium-steel, are phosphated and will be supplied with snap ring and pin.



ORDER NO.	Description	Square drive	S	L	D
			mm	mm	mm
9 1424 0570	Hexagon sockets for allen head screws	1/2"	5	55	30
9 1424 0580	Hexagon sockets for allen head screws	1/2"	6	55	30
9 1424 0590	Hexagon sockets for allen head screws	1/2"	8	55	30
9 1424 0600	Hexagon sockets for allen head screws	1/2"	10	55	30
9 1424 0610	Hexagon sockets for allen head screws	1/2"	12	55	30
9 1424 0540	Hexagon sockets for allen head screws	3/4"	17	85	44
9 1424 0550	Hexagon sockets for allen head screws	3/4"	19	85	44
9 1424 0660	Hexagon sockets for allen head screws	3/4"	22	85	44
9 1424 0670	Hexagon sockets for allen head screws	3/4"	24	85	44
9 1424 0440	Hexagon sockets for allen head screws	1"	17	75	54
9 1424 0450	Hexagon sockets for allen head screws	1"	19	75	54
9 1424 0460	Hexagon sockets for allen head screws	1"	22	75	54
9 1424 0470	Hexagon sockets for allen head screws	1"	24	75	54
9 1424 0710	Hexagon sockets for allen head screws	1 1/2"	17	120	57
9 1424 0720	Hexagon sockets for allen head screws	1 1/2"	19	120	57
9 1424 0730	Hexagon sockets for allen head screws	1 1/2"	22	120	57
9 1424 0740	Hexagon sockets for allen head screws	1 1/2"	24	120	57

EXTENSIONS

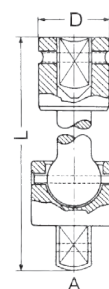
The extensions according to DIN 3129/ISO 2725 are made of super chrome-vanadium-steel, are phosphated and will be supplied with snap ring and pin.



ORDER NO.	Description	Square drive	A	L	D
			mm	mm	mm
9 1420 0050	Extension	1/2"	1/2"	125	25
9 1420 0060	Extension	1/2"	1/2"	250	25
9 1420 0100	Extension	3/4"	3/4"	175	44
9 1420 0110	Extension	3/4"	3/4"	250	44
9 1420 0120	Extension	3/4"	3/4"	330	44
9 1420 0140	Extension	1"	1"	175	54
9 1420 0150	Extension	1"	1"	250	54
9 1420 0160	Extension	1"	1"	330	54
9 1420 0170	Extension	1 1/2"	1 1/2"	250	57
9 1420 0180	Extension	1 1/2"	1 1/2"	380	57
9 1420 0190	Extension	1 1/2"	1 1/2"	500	57

UNIVERSAL JOINTS

The universal joints according to DIN 3129/ISO 2725 are made of super chrome-vanadium-steel, are phosphated and will be supplied with snap ring and pin.



ORDER NO.	Description	Square drive	A	L	D
			mm	mm	mm
9 1422 0040	Universal joint	1/2"	1/2"	75	30
9 1422 0070	Universal joint	3/4"	3/4"	65	44
9 1422 0090	Universal joint	1"	1"	100	54
9 1422 0110	Universal joint	1 1/2"	1 1/2"	175	57

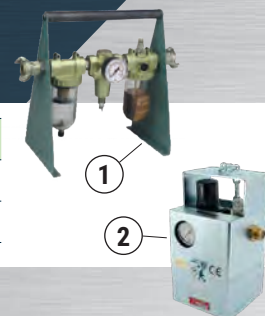


SYSTEM ACCESSORIES

SYSTEM ACCESSORIES

SERVICE UNITS

ORDER NO.	Pos.	Description
9 2406 0260	1	Portable service unit with pressure regulator 3/4"
9 2406 0650	2	Portable service unit with protection housing and pressure regulator 3/4"



HOSES

ORDER NO.	Description	For type
9 3610 0410	Pneumatic pressure hose ID 13 mm, 2.5 m length, screw-on claw clamp	6 1034, 6 1035
9 3610 0420	Pneumatic pressure hose ID 16 mm, 2.5 m length, screw-on claw clamp	6 1312-6 1412
9 3610 0430	Pneumatic pressure hose ID 19 mm, 2.5 m length, screw-on claw clamp	6 1410-6 1511
2 1317 9010	Hydraulic hose set	6 1515, 6 1514
1 5080 9020	Hydraulic hose set	6 1520



MISC. ACCESSORIES

ORDER NO.	Description
9 9902 0120	Multi oil for cleaning and protection



More accessories on request.

EXAMPLES OF APPLICATION



1225E