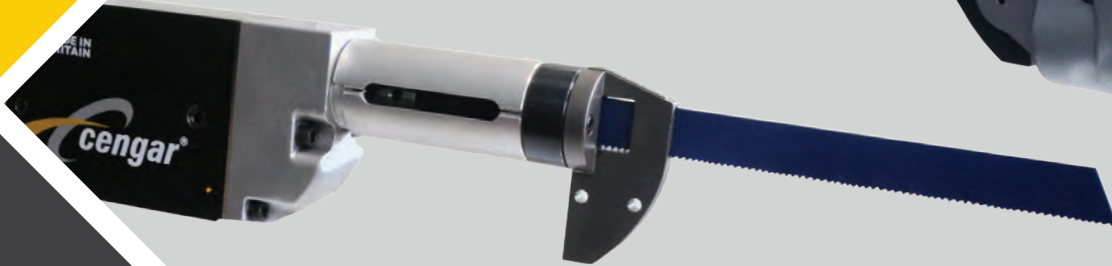


TECHNISCH BUREAU

DUSPRA

**cengar**<sup>®</sup>



**AIR SAWS FOR  
PROFESSIONALS**

**LOW AIR  
CONSUMPTION**

**LOW VIBRATION**

**HIGH QUALITY**

**MADE IN  
BRITAIN**  
**ATEX CERTIFIED**



Cengar started business in 1945 to manufacture tools for the Motor Trade and Aircraft Industry. We patented the first twin piston saw in 1954 and introduced a further new design in 1964. Since then, we have continuously improved on the original idea by using new materials and design techniques, to produce the best quality Professional Air Saws in the world. Cengar is an ISO 9001 accredited company.

## Main product features:

- ATEX Certified
- Low Air Consumption
- Reliable and long-lasting
- Low vibration
- Low noise
- Low maintenance – Easy and inexpensive to repair
- Fast cutting
- 100% recyclable

## Our saws are used for cutting every type of metal and composite in a wide range of industries including:

- Offshore Oil Rigs
- Petrochemical Refineries
- Gas and Water Utilities
- Luxury Yacht Manufacture
- Wooden Pallet Repair
- Ship Maintenance
- Underground Mining
- Vehicle repair and modifications

## Who we work with:



## Blade Selection

All of our Bi-Metal Blades are made from high quality European Steel which will not shatter even when bowed at an angle of 90°.

Thickness (mm)	32 TPI	24 TPI	18 TPI	14 TPI	10/14 TPI	10 TPI	8 TPI	6 TPI
2	3	2	1	1	1	1	1	0
5	6	5	4	3	2	2	2	1
10	13	9	7	6	5	4	3	2
15	19	14	11	8	7	6	5	4
20	25	19	14	11	9	8	6	5
25	31	24	18	14	12	10	8	6
30	38	28	21	17	14	12	9	7
35	44	33	25	19	17	14	11	8
40	50	38	28	22	19	16	13	9
45	57	43	32	25	21	18	14	11
50	63	47	35	28	24	20	16	12
55	69	52	39	30	26	22	17	13
60	76	57	43	33	28	24	19	14
65	82	61	46	36	31	26	20	15
70	88	68	50	39	33	28	22	17
75	94	71	53	41	35	30	24	18
80	101	76	57	44	38	31	25	19
85	107	80	60	47	40	33	27	20
90	113	85	64	50	43	35	28	21
95	120	90	67	52	45	37	30	22
100	126	94	71	55	47	39	31	24

### General Rule

No less than 3 teeth in contact

Ideally between 6 and 12 teeth in contact

No more than 24 teeth in contact

The numbers in the coloured boxes indicates the actual number of teeth which will be in contact with the work

## Saw selection

Pipe Diameter (mm)	PL905 Hand Held	CL50 / 75 On Clamp	JSZ / JSM On Clamp
50	150mm blade	200mm blade	200mm blade
100	200mm blade	250mm blade	250mm blade
150	250mm blade	300mm blade	300mm blade
200	300mm blade		350mm blade
250			400mm blade
300			450mm blade

### Standard Blade Range

#### 12mm (1/2") blades

HP300  
MC220  
MYT 150  
MYN 150

#### For use in the JP901, PL905 and the CL50 Saws

300mm long 18 tpi, 24tpi and 32tpi  
220mm long 24 tpi only  
150mm long 18 tpi only  
150mm long 18 tpi only

#### 19mm (3/4") blades

MB150  
MB200  
MB250  
MB300

#### For use in the CL75 Saw

150mm long 10 tpi, 10-14 tpi, 18 tpi and 24 tpi  
200mm long 10 tpi, 10-14 tpi, 18 tpi and 24 tpi  
250mm long 10 tpi, 18 tpi and 24 tpi  
300mm long 10 tpi, 10-14 tpi and 18 tpi

#### 25mm (1") blades

MJ300  
MJ450

#### For use in the JSZ and JSM Saws

300mm long 6 tpi, 8 tpi, 10-14 tpi  
450mm long 6 tpi, 8 tpi, 10-14 tpi



The JP901 saw has a short, fast stroke and was made for cutting thin section glass fibre, reinforced composites and light gauge metal. The saw can be used to cut shapes in tight spaces and is suitable for cutting instrument panels in boats, buses, trucks and cars. An optional dust extraction hood is also available for use with Vacuum cleaners and fixed dust extraction systems.

Part Code	Description	 ATEX Specification
JP901	With 1/2" nose piece	II 2G Ex h IIC T3 Gb

## TECHNICAL SPECIFICATION

JP901											
Strokes per minute	Stroke (mm) (inch)	Standard nosepiece (mm) (inch)	Air Consumption (m <sup>3</sup> /min) (cfm)	Weight (Kg) (Lbs)	Length (mm) (inch)	Height (mm) (inch)	Width (mm) (inch)	Air Pressure (Bar) (psi)	Sound Pressure Level dB (A)	Sound Power Level dB (A)	Vibration Level (m/s <sup>2</sup> )
10000	9	12	0.116	1.6	270	70	40	5	68.6	78	6.5
	3/8	1/2	4	3 1/2	10 3/4	2 3/4	1 5/8	75	68.6	78	6.5

## HSS BIMETAL BLADES

CENGAR BLADES FOR JP901 SAW					
Part Code	Pack size	Teeth per inch (tpi)	Length (mm)	Width (mm)	Height (mm)
HP300/14	50	14	305	0.6	12
HP300/18	50	18	305	0.6	12
HP300/24	50	24	305	0.6	12
HP300/32	50	32	305	0.6	12
MC220/10	50	10	220	0.9	12
MC220/14	50	14	220	0.9	12
MC220/18	50	18	220	0.9	12
MC220/24	50	24	220	0.9	12
MCSS220/18*	50	18	220	0.9	12
MYN150/18	10	18	155	0.6	12
MYT150/18	10	18	155	0.6	12

\*Stainless Steel



## BLADE SELECTION FOR CUTTING SOLID MATERIAL

RECOMMENDED BLADE PITCHES				
Thickness (mm)	32 tpi	24 tpi	18 tpi	14 tpi
2	*			
5	*			
10		*	*	

## ACCESSORIES

Part Code	Description
LUB01	Inline Oiler for all air tools
NPT	Adaptor BSP to NPT
VACS001	Dust extraction hood
GO9105P	100ml (3 1/2 oz) Plastic bottle (pack size 20)
GO9107P	250ml (8 1/2 oz) Plastic bottle (pack size 20)
GO9109	5l (1 1/3 U.S. Gallons) (pack size 1)
GO9110	25l (6 2/3 U.S. Gallons) (pack size 1)



Top: With outside rear trigger  
Bottom: With inside front trigger



The PL905 is designed specifically for use in a continuous production environment such as pallet repair but increasingly used by Public Utilities contractors, The Oil, Gas and Petrochemical Industry, Bus and Truck Builders and Luxury car manufacturers for cutting all types of metal and composite materials. The PL905 is a low vibration saw which cuts faster than the CL saws and is suitable for cutting metal up to 20mm (3/4") and GRP up to 50mm (2") thick.

Part Code	Description	ATEX Specification
PL905	With outside rear trigger - 12mm (1/2") Nose piece	II 2G Ex h IIC T2 Gb
PL905FT	With inside front trigger - 12mm (1/2") nose piece	II 2G Ex h IIC T2 Gb

## TECHNICAL SPECIFICATION

PL905 & PL905FT											
Strokes per minute	Stroke (mm) (inch)	Standard nosepiece (mm) (inch)	Air Consumption (m <sup>3</sup> /min) (cfm)	Weight (Kg) (Lbs)	Length (mm) (inch)	Height (mm) (inch)	Width (mm) (inch)	Air Pressure (Bar) (psi)	Sound Pressure Level dB (A)	Sound Power Level dB (A)	Vibration Level (m/s <sup>2</sup> )
2000	22	12	0.116	2.4	300	135	40.6	5 - 6	68.7	69.8	1.9
	7/8	1/2	4	5 1/4	11 3/4	5 1/4	1 5/8	75 - 90	68.7	69.8	1.9

## HSS BIMETAL BLADES

CENGAR BLADES FOR PL905 SAW					
Part Code	Pack size	Teeth per inch (tpi)	Length (mm)	Width (mm)	Height (mm)
HP300/14	50	14	305	0.6	12
HP300/18	50	18	305	0.6	12
HP300/24	50	24	305	0.6	12
HP300/32	50	32	305	0.6	12
MC220/10	50	10	220	0.9	12
MC220/14	50	14	220	0.9	12
MC220/18	50	18	220	0.9	12
MC220/24	50	24	220	0.9	12
MCSS220/18*	50	18	220	0.9	12

\*Stainless Steel



## BLADE SELECTION FOR CUTTING SOLID MATERIAL

RECOMMENDED BLADE PITCHES				
Thickness (mm)	24 tpi	18 tpi	14 tpi	10 tpi
2	*			
5	*			
10	*	*		
15		*	*	
20			*	*
25				*
30				*
35				*
40				

## ACCESSORIES


Part Code	Description
LUB01	Inline Oiler for all air tools
NPT	Adaptor BSP to NPT
9507CFA	Fall arrestor plug
GO9105P	100ml (3 1/2 oz) Plastic bottle (pack size 20)
GO9107P	250ml (8 1/2 oz) Plastic bottle (pack size 20)
GO9109	5l (1 1/3 U.S. Gallons) (pack size 1)
GO9110	25l (6 2/3 U.S. Gallons) (pack size 1)



Top: With outside rear trigger  
Bottom: With inside front trigger



The CL50 saw was the first of its kind in the world, originally designed for use with broken hand hacksaw blades but is now used with our range of standard and special 12mm (1/2") Bi Metal blades. The CL50 was invented in 1954 and can be used for cutting all types of metal and plastics.

Part Code	Description	 ATEX Specification
CL50	With outside rear trigger - 12mm (1/2") nose piece	II 2G Ex h IIC T2 Gb
CL50FT	With inside front trigger - 12mm (1/2") nose piece	II 2G Ex h IIC T2 Gb

## TECHNICAL SPECIFICATION

CL50 & CL50FT											
Strokes per minute	Stroke (mm) (inch)	Standard nosepiece (mm) (inch)	Air Consumption (m <sup>3</sup> /min) (cfm)	Weight (Kg) (Lbs)	Length (mm) (inch)	Height (mm) (inch)	Width (mm) (inch)	Air Pressure (Bar) (psi)	Sound Pressure Level dB (A)	Sound Power Level dB (A)	Vibration Level (m/s <sup>2</sup> )
1200	45	12	0.168	2.5	400	134	40.6	5 - 6	82.9	92.4	3.2
	1 ¾	½	5 ¾	5 ½	15 ¾	5 ¼	1 ⅝	75 - 90	82.9	92.4	3.2

## HSS BIMETAL BLADES

### CENGAR BLADES FOR CL50 & CL50FT SAW

Part Code	Pack size	Teeth per inch (tpi)	Length (mm)	Width (mm)	Height (mm)
HP300/14	50	14	305	0.6	12
HP300/18	50	18	305	0.6	12
HP300/24	50	24	305	0.6	12
HP300/32	50	32	305	0.6	12

MC220/10	50	10	220	0.9	12
MC220/14	50	14	220	0.9	12
MC220/18	50	18	220	0.9	12
MC220/24	50	24	220	0.9	12

MCSS220/18*	50	18	220	0.9	12
-------------	----	----	-----	-----	----

\*Stainless Steel



## BLADE SELECTION FOR CUTTING SOLID MATERIAL

### RECOMMENDED BLADE PITCHES

Thickness (mm)	24 tpi	18 tpi	14 tpi	10 tpi
2	*			
5	*			
10	*	*		
15		*	*	
20			*	*
25				*
30				*
35				
40				

## ACCESSORIES

Part Code	Description
LUB01	Inline Oiler for all air tools
NPT	Adaptor BSP to NPT
9507CFA	Fall arrestor plug
GO9105P	100ml (3 1/2 oz) Plastic bottle (pack size 20)
GO9107P	250ml (8 1/2 oz) Plastic bottle (pack size 20)
GO9109	5l (1 1/3 U.S. Gallons) (pack size 1)
GO9110	25l (6 2/3 U.S. Gallons) (pack size 1)



Top: With outside rear trigger  
Bottom: With inside front trigger



The CL75 saw uses 19mm (3/4") wide Bi Metal blades to cut pipes including stainless steel and cast iron up to 150mm (6") diameter. It can also be fitted to a standard or power feed clamp for square cutting.

Part Code	Description	ATEX Specification
CL75	With outside rear trigger - 19mm 3/4" nose piece	II 2G Ex h IIC T3 Gb
CL75FT	With inside front trigger - 19mm 3/4" nose piece	II 2G Ex h IIC T3 Gb

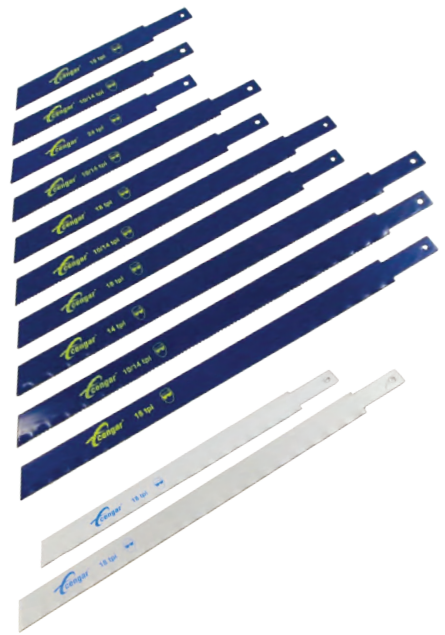
## TECHNICAL SPECIFICATION

CL75 & CL75FT											
Strokes per minute	Stroke (mm) (inch)	Standard nosepiece (mm) (inch)	Air Consumption (m <sup>3</sup> /min) (cfm)	Weight (Kg) (Lbs)	Length (mm) (inch)	Height (mm) (inch)	Width (mm) (inch)	Air Pressure (Bar) (psi)	Sound Pressure Level dB (A)	Sound Power Level dB (A)	Vibration Level (m/s <sup>2</sup> )
1200	45	19	0.168	2.5	400	134	40.6	5 - 6	82.9	92.4	2.4
	1 ¾	¾	5 ¾	5 ½	15 ¾	5 ¼	1 ⅝	75 - 90	82.9	92.4	2.4

## HSS BIMETAL BLADES

CENGAR BLADES FOR CL75 SAW					
Part Code	Pack size	Teeth per inch (tpi)	Length (mm)	Width (mm)	Height (mm)
MB150/10-14	5	10	152	0.9	19
MB150/18	5	18	152	0.9	19
MB150/24	5	24	152	0.9	19
MB200/10-14	5	10	204	0.9	19
MB200/18	5	18	204	0.9	19
MB200/24	5	24	204	0.9	19
MB250/10-14	5	10	254	0.9	19
MB250/18	5	18	254	0.9	19
MB250/24	5	24	254	0.9	19
MB300/10-14	5	10	305	0.9	19
MB300/18	5	18	305	0.9	19
MB300/24	5	24	305	0.9	19
MBSS250/18*	5	18	305	0.9	19
MBSS150/18*	5	18	305	0.9	19

\*Stainless Steel



## BLADE SELECTION FOR CUTTING SOLID MATERIAL

RECOMMENDED BLADE PITCHES					
Thickness (mm)	24 tpi	18 tpi	14 tpi	10 / 14 Vari-pitch tpi	10 tpi
2	*				
5	*				
10	*	*			
15		*	*	*	
20			*	*	*
25				*	*
30					*
35					*
40					*


## ACCESSORIES

Part Code	Description
CCSG3	Clamp and Mounting Kit
CCSG3P	Powered clamp & Mounting kit
LUB01	Inline Oiler for all air tools
NPT	Adaptor BSP to NPT
9507CFA	Fall arrestor plug
GO9105P	100ml (3 1/2 oz) Plastic bottle (pack size 20)
GO9107P	250ml (8 1/2 oz) Plastic bottle (pack size 20)
GO9109	5l (1 1/3 U.S. Gallons) (pack size 1)
GO9110	25l (6 2/3 U.S. Gallons) (pack size 1)





A more powerful version of the CL75 saw and is suitable for cutting all types of steel section and pipes up to 150mm (6") diameter. The CS75 can be used freehand as well as being fitted to a standard clamp or power feed clamp for square cutting.

Part Code	Description	 ATEX Specification
CS75	With outside rear trigger - 3/4" Nose piece	II 2G Ex h IIC T3 Gb
CS75KIT	With outside rear trigger complete with clamp- 3/4" Nose piece	II 2G Ex h IIC T3 Gb
CS75FT	With front trigger - 3/4" Nose piece	II 2G Ex h IIC T3 Gb

## TECHNICAL SPECIFICATION

CS75											
Strokes per minute	Stroke (mm) (inch)	Standard nosepiece (mm) (inch)	Air Consumption (m <sup>3</sup> /min) (cfm)	Weight (Kg) (Lbs)	Length (mm) (inch)	Height (mm) (inch)	Width (mm) (inch)	Air Pressure (Bar) (psi)	Sound Pressure Level dB (A)	Sound Power Level dB (A)	Vibration Level (m/s <sup>2</sup> )
1200	45	19	0.168	2.5	400	134	40.6	5 - 6	82.9	92.4	2.4
	1 ¾	¾	5 ¾	5 ½	15 ¾	5 ¼	1 ½	75 - 90	82.9	92.4	2.4

## HSS BIMETAL BLADES

### CENGAR BLADES FOR CS75 SAW

Part Code	Pack size	Teeth per inch (tpi)	Length (mm)	Width (mm)	Height (mm)
MB150/10-14	5	10	152	0.9	19
MB150/18	5	18	152	0.9	19
MB150/24	5	24	152	0.9	19

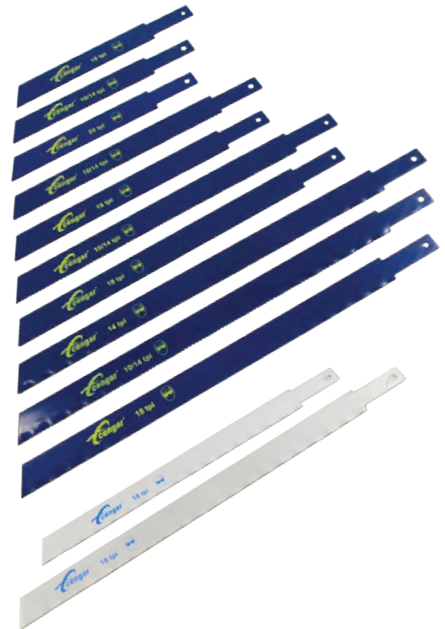
MB200/10-14	5	10	204	0.9	19
MB200/18	5	18	204	0.9	19
MB200/24	5	24	204	0.9	19

MB250/10-14	5	10	254	0.9	19
MB250/18	5	18	254	0.9	19
MB250/24	5	24	254	0.9	19

MB300/10-14	5	10	305	0.9	19
MB300/18	5	18	305	0.9	19
MB300/24	5	24	305	0.9	19

MBSS250/18*	5	18	305	0.9	19
MBSS150/18*	5	18	305	0.9	19

\*Stainless Steel



## BLADE SELECTION FOR CUTTING SOLID MATERIAL

### RECOMMENDED BLADE PITCHES

Thickness (mm)	24 tpi	18 tpi	14 tpi	10 / 14 Vari-pitch tpi	10 tpi
2	*				
5	*				
10	*	*			
15		*	*	*	
20			*	*	*
25				*	*
30					*
35					*
40					*

## ACCESSORIES

Part Code	Description
CCSG3	Clamp and Mounting Kit
CCSG3P	Powered clamp & Mounting kit
LUB01	Inline Oiler for all air tools
NPT	Adaptor BSP to NPT
9507CFA	Fall arrestor plug
GO9105P	100ml (3 1/2 oz) Plastic bottle (pack size 20)
GO9107P	250ml (8 1/2 oz) Plastic bottle (pack size 20)
GO9109	5l (1 1/3 U.S. Gallons) (pack size 1)
GO9110	25l (6 2/3 U.S. Gallons) (pack size 1)





The JSZ is primarily used in the Oil, Gas and Petrochemical and Pipe Fabrication Industries for cutting steel sections and pipe up to 300mm (12") diameter. The Saw uses 25mm (1") Bi Metal blades, comes complete with a pipe & profile clamp and a blade guide to ensure straight cuts. This dual speed Saw is fitted with automatic lubrication and a trigger lock and using it in a mounted position dramatically reduces vibration.

Part Code	Description	ATEX Specification
JSZ	Supplied complete with clamp and blade guide- 1" Nose piece	II 2G Ex h IIC T2 Gb

## TECHNICAL SPECIFICATION

JSZ											
Strokes per minute	Stroke (mm) (inch)	Standard nosepiece (mm) (inch)	Air Consumption (m <sup>3</sup> /min) (cfm)	Weight (Kg) (Lbs)	Length (mm) (inch)	Height (mm) (inch)	Width (mm) (inch)	Air Pressure (Bar) (psi)	Sound Pressure Level dB (A)	Sound Power Level dB (A)	Vibration Level (m/s <sup>2</sup> )
400 & 600	57	25	0.168	6.85	448	141	54	5-6	80.5	89.9	N/A
	2 ¼	1	5 ¾	15	17 ½	5 ½	2 ½	75 - 90	80.5	89.9	N/A

## HSS BIMETAL BLADES

CENGAR BLADES FOR JSZ SAW					
Part Code	Pack size	Teeth per inch (tpi)	Length (mm)	Width (mm)	Height (mm)
MJ300/6	10	6	305	1.6	25
MJ300/8	10	8	305	1.6	25
MJ300/10-14	10	10	305	1.6	25
MJ300/14	10	14	305	1.6	25
MJ450/6	10	6	457	1.6	25
MJ450/8	10	8	457	1.6	25
MJ450/10-14	10	10	457	1.6	25
MJ450/14	10	14	457	1.6	25



## BLADE SELECTION FOR CUTTING SOLID MATERIAL

RECOMMENDED BLADE PITCHES				
Thickness (mm)	14 tpi	10 / 14 Vari-pitch tpi	8 tpi	6 tpi
10	*	*	*	
20	*	*	*	*
30	*	*	*	*
40	*		*	*
50			*	*
60			*	*
70			*	*
80				*
90				*
100				*

## ACCESSORIES

Part Code	Description
CP1	Standard Clamp only for Pipes & Profiles
CP1P	Power feed clamp for pipes & profiles
CP1RK	Retro fit Power feed Kit for CP1 clamp
CP2	Blade Guide only
CP1/10	Chain Link assembly
LUB01	Inline Oiler for all air tools
NPT	Adaptor BSP to NPT
GO9105P	100ml (3 1/2 oz) Plastic bottle (pack size 20)
GO9107P	250ml (8 1/2 oz) Plastic bottle (pack size 20)
GO9109	5l (1 1/3 U.S. Gallons) (pack size 1)
GO9110	25l (6 2/3 U.S. Gallons) (pack size 1)





The JSM Saw was designed specifically for use in underground Coal Mining, but is equally useful in all kinds of mining activities. It is based on our proven JSZ Saw used in Oil, Gas and Petrochemical sites throughout the world for cutting steel sections and pipe up to 300mm (12") diameter.

Part Code	Description	 ATEX Specification
JSM	Supplied complete with clamp and blade guide- 1" Nose piece	II 2G Ex h IIC T2 Gb

## TECHNICAL SPECIFICATION

JSM											
Strokes per minute	Stroke (mm) (inch)	Standard nosepiece (mm) (inch)	Air Consumption (m <sup>3</sup> /min) (cfm)	Weight (Kg) (Lbs)	Length (mm) (inch)	Height (mm) (inch)	Width (mm) (inch)	Air Pressure (Bar) (psi)	Sound Pressure Level dB (A)	Sound Power Level dB (A)	Vibration Level (m/s <sup>2</sup> )
400 & 600	57	25	0.168	6.85	448	141	54	5-6	80.5	89.9	N/A
	2 ¼	1	5 ¾	15	17 ½	5 ½	2 ⅛	75 - 90	80.5	89.9	N/A

## HSS BIMETAL BLADES

CENGAR BLADES FOR JSM SAW					
Part Code	Pack size	Teeth per inch (tpi)	Length (mm)	Width (mm)	Height (mm)
MJ300/6	10	6	305	1.6	25
MJ300/8	10	8	305	1.6	25
MJ300/10-14	10	10	305	1.6	25
MJ300/14	10	14	305	1.6	25
MJ450/6	10	6	457	1.6	25
MJ450/8	10	8	457	1.6	25
MJ450/10-14	10	10	457	1.6	25
MJ450/14	10	14	457	1.6	25



## BLADE SELECTION FOR CUTTING SOLID MATERIAL

RECOMMENDED BLADE PITCHES				
Thickness (mm)	14 tpi	10 / 14 Vari-pitch tpi	8 tpi	6 tpi
10	*	*	*	
20	*	*	*	*
30	*	*	*	*
40	*		*	*
50			*	*
60			*	*
70			*	*
80				*
90				*
100				*

## ACCESSORIES

Part Code	Description
CP1	Standard Clamp only for Pipes & Profiles
CP1P	Power feed clamp for pipes & profiles
CP1RK	Retro fit Power feed Kit for CP1 clamp
CP2	Blade Guide only
CP1/10	Chain Link assembly
LUB01	Inline Oiler for all air tools
NPT	Adaptor BSP to NPT
GO9105P	100ml (3 1/2 oz) Plastic bottle (pack size 20)
GO9107P	250ml (8 1/2 oz) Plastic bottle (pack size 20)
GO9109	5l (1 1/3 U.S. Gallons) (pack size 1)
GO9110	25l (6 2/3 U.S. Gallons) (pack size 1)



## PALLET SPREADER

Manufactured for use in a demanding working environment, light and easy to use. PS100 is ideal for Euro Pallets. PS80 for USA Pallets. Can be used safely at any air pressure between 4 and 8 Bar. Power at 6 Bar 1900N.

Part Code	Description	Air Consumption (cfm)	Weight (Kg)
PS80	Spreader for USA pallet repair	4	2.6
PS100	Spreader for Euro pallet repair	4	2.7



## TECHNICAL SPECIFICATION

PALLET SPREADER											
Strokes per minute	Stroke (mm) (inch)	Standard nosepiece (mm) (inch)	Air Consumption (m <sup>3</sup> /min) (cfm)	Weight (Kg) (Lbs)	Length (mm) (inch)	Height (mm) (inch)	Width (mm) (inch)	Air Pressure (Bar) (psi)	Sound Pressure Level dB (A)	Sound Power Level dB (A)	Vibration Level (m/s <sup>2</sup> )
N/A	N/A	N/A	0.116	2.65	250	165	95	1-8	N/A	N/A	N/A
N/A	N/A	N/A	4.0	5.84	9.8	6.4	3.7	14 - 116	N/A	N/A	N/A

## SPRING BALANCER

Spring Balancer Improves work safety and efficiency.

Model	Capacity (Kg)	Stroke (m)	Weight (Kg)
TW5	2.5 - 5.0	1.3	1.5
TW9	4.5 - 9.0	1.3	3.4
TW15	9.0 - 15.0	1.3	3.8



## CENGAR PALLET BLADES

Made from high quality Shatterproof European Steel.

For customers who use Electric Saws, we supply our Cengar Electric pallet blades in four versions.

Part Code	Teeth per inch	Length (mm)	Width (mm)	Height (mm)	For Use With
MC 220	10-24	220	0.9	12	PL905
ME 200/8/12	8/12	200	1.7	19	Electric Saws
ME 200/8/12R	8/12	200	1.7	19	Electric Saws
ME 190R/8/12	8/12	190	1.7	19	Electric Saws
ME 225/10/10	10/10	225	0.9	19	Electric Saws

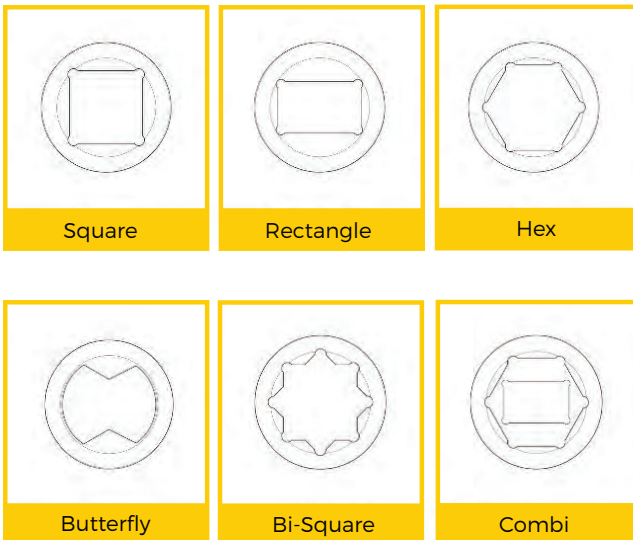


We manufacture high-quality metric and imperial size impact sockets up to 2 1/2" drive, special square drives, extensions and accessories for use on pneumatic, hydraulic, petrol and battery impact wrenches. We also manufacture a range of scaffold sockets, universal joints and quick release drill bit attachments with low volume specials made to order at competitive prices. All sockets are manufactured from solid bar for added strength and lower weight.



## TECHNICAL SPECIFICATION

### Fastener Profiles



### Drive Types



## ACCESSORIES

Part Code	Description
299	Steel pin 49mm
299/1	Steel pin 57mm
299/2	Steel pin 67mm
301	Rubber ring
MS50	Maxi Clip 50mm
MS60	Maxi Clip 60mm
MS70	Maxi Clip 70mm
AUG	Augering attachment European
AUGUM	Augering attachment American
GEISAUG	Augering attachment Craffenstaden Shank

### Auger Bits 9mm Hex and 230mm long

S10	10mm Premium Hardwood
S13	13mm Premium Hardwood
S16	16mm Premium Hardwood
S17	17mm Premium Hardwood
S18	18mm Premium Hardwood
S19	19mm Premium Hardwood
S22	22mm Premium Hardwood

## Technical Specification - Saws

		CL50	CL75	CS75	JP901	PL905	JSZ / JSM
Speed - strokes per minute		1200	1200	1200	10,000	2,000	400 & 600
Stroke	<b>mm</b>	45	45	45	9	22	57
	<b>in</b>	1¾	1¾	1¾	¾	¾	2¼
Standard Nosepiece	<b>mm</b>	12	19	19	12	12	25
	<b>in</b>	½	¾	¾	½	½	1
Air Consumption	<b>m3/min</b>	0.168	0.168	0.168	0.116	0.116	0.168
	<b>cfm</b>	5¾	5¾	5¾	4	4	5¾
Weight	<b>kgs</b>	2.5	2.5	2.5	1.6	2.4	6.85
	<b>lbs</b>	5½	5½	5½	3½	5¼	15
Length	<b>mm</b>	400	400	400	270	300	448
	<b>in</b>	15¾	15¾	15¾	10¾	11¾	17¾
Height	<b>mm</b>	134	134	134	70	135	141
	<b>in</b>	5¼	5¼	5¼	2¾	5¼	5½
Width	<b>mm</b>	40.6	40.6	40.6	40	40.6	54
	<b>in</b>	1½	1½	1½	1½	1½	2½
Air Pressure	<b>Bar</b>	5-6	5-6	5-6	5	5-6	5-6
	<b>p.s.i</b>	75-90	75-90	75-90	75	75-90	75-90
Sound Pressure Level	<b>dB (A)</b>	82.9	82.9	82.9	68.6	68.7	80.5
Sound Power Level	<b>dB (A)</b>	92.4	92.4	92.4	78	69.8	89.9
Vibration Level	<b>m/s²</b>	3.2	3.2	2.4	6.5	1.9	N/A

Please note: The vibration levels shown above will reduce when the saw is used with a clamp.

If you have a cutting problem, send us the details and a sample of your material and we will carry out tests to determine the right saw and blade to do the job.

We can make bespoke versions of our saws to meet unusual requirements.

### Other Products:

Blades for use on electric reciprocating saws

Saws and blades for use on pipes up to 800mm diameter.



Springfield works, Saddleworth Road  
Halifax, England, HX4 8LZ

+44 (0) 1422 377 904  
enquiries@cengar.com



[www.cengar.com](http://www.cengar.com)

Duspra B.V. | Amersfoortseweg 24 - 14 | 3951 LB | Maarn | Nederland  
tel. 0180-410 100 | [sales@duspra.nl](mailto:sales@duspra.nl) | [www.duspra.nl](http://www.duspra.nl)

Approved Distributor

TECHNISCH BUREAU

**DUSPRA**

[www.duspra.nl](http://www.duspra.nl)

+31 (0) 180 410 100 | [sales@duspra.nl](mailto:sales@duspra.nl)

For more information or a demonstration  
please contact us or one of our approved  
distributors