



ATEX APPROVED



AIR SAWS FOR THE PROFESSIONAL



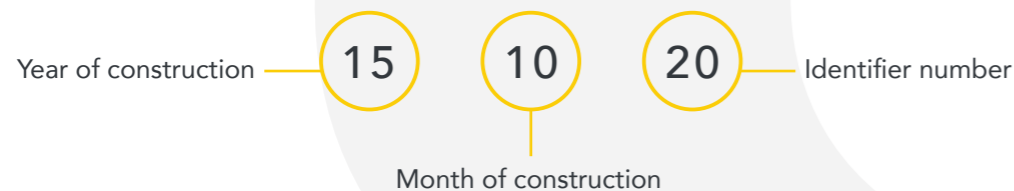
CL50 & CL75
operating instructions

We recommend normal safe working practices should be followed as per the Health and Safety at Work Act, or the appropriate National and State Laws. We recommend that eye and ear protection be worn when using Cengar Saws.

SPECIFICATIONS	
Speed	1200 strokes per minute
Stroke	45mm
Air Consumption	0.168m ³ /minute
Air Pressure	5-6 Bar
Weight	2.5Kgs
Length	400mm
Height	135mm
Width	40.6mm
Vibration Level Averaged	3.2m/s ²
Sound Pressure Level	82.9dbA
Sound Power Level	92.4dbA
CL50 Atex Certification	Ⓔ II 2G Ex h IIC T2 Gb
CL75 Atex Certification	Ⓔ II 2G Ex h IIC T3 Gb

Each machine is marked with a serial number, which contains the year and month of construction, along with an identifier number.

Serial number example:



- CE Ⓔ CL50 II 2G Ex h IIC T2 Gb
- CE Ⓔ CL75 II 2G Ex h IIC T3 Gb

Machine identified as shown, nose piece not to be interchanged

We the undersigned, declare under our sole responsibility that the following apparatus:

Machine Description	Cengar Air Saw
Machine Type	CL50 & CL75

Is in conformity with the following relevant EC legislation:

Machinery Directive	2006/42/EC
Atex Directive	2014/34/EU

Based on the following Harmonised Standards:

EN ISO 4414:2010	EN ISO 80079-36:2016
EN ISO 80079-37:2016	EN 60079-0:2018

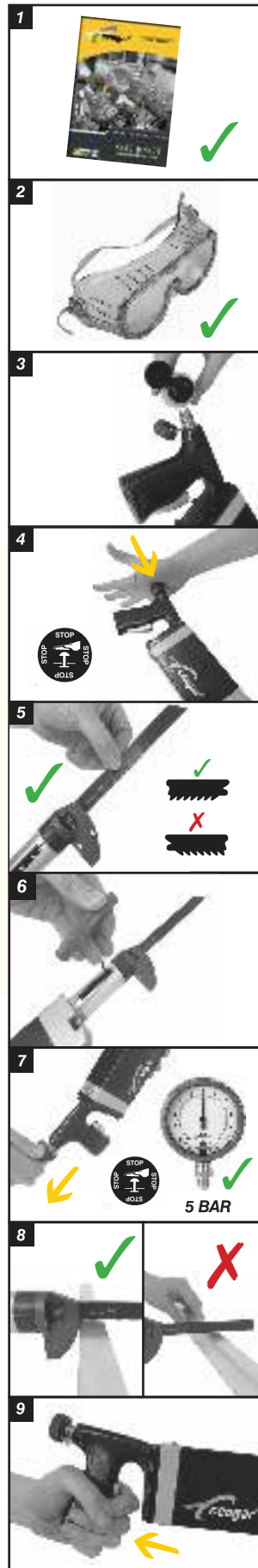
And therefore complies with the essential requirements of those directives.

The following ignition hazards have been identified when the equipment is in use, hot surfaces, mechanical sparks, electrostatic charging. These are mitigated as the equipment was designed to meet the requirements of protection concept constructional safety "c".

ADDITIONAL INFORMATION	
ATEX Coding	CL 50 Ⓔ II 2G Ex h IIC T2 Gb CL 75 Ⓔ II 2G Ex h IIC T3 Gb
Notified Body (Atex holding technical file)	Element Materials Technology Rotterdam B.V. Voorerf 18, 4824 GN Breda, Netherlands
Identification Number	2812
Certificate No.	EMT18ATEX 0032X
Authorised Signature	<i>M. Lammie</i>
Date	06/02/2020
Title of Signatory	Technical Manager - Cengar Ltd. Springfield Works, Saddleworth Road, Greetland, Halifax HX4 8LZ
Special Conditions of Safe Use (on the certificate)	<ol style="list-style-type: none"> Suitably approved static dissipating or conductive air hose only to be attached to the equipment and terminated to the air supply. Operator to ensure that there is less than 1 Ohm resistance between the ground at the air source and any metallic object to be cut with the equipment. The equipment shall be supplied from a clean air source in an area known to not contain a potentially explosive atmosphere. A filter must be fitted to the supply compressor inlet to prevent dust airflow within the equipment. To comply with ATEX certification regulations it is necessary to use Cengar branded Blades with Cengar Saws.

1. Under normal working conditions can be used in a Zone 1 environment.

2. Classification based on tests cutting a selection of steels & composite materials (MB, MC, Yellow, JSZ) Blades.



INSTRUCTIONS

1. Always read the instructions.
2. Always wear safety glasses.
3. Unscrew oil cap and fill with Cengar Green Oil. Replace cap.
4. Isolate air supply before fitting blade by pushing stop button in.
5. Fit the blade with the teeth facing the machine. Avoid handling the blade teeth.
6. Secure blade by tightening both grip screws with supplied T key.
7. Connect to 5-6 bar air supply and pull out stop button.
8. Ensure nosepiece is pressed against work piece to be cut.
9. Press trigger and apply light downward pressure.

CENGAR BLADE SELECTION FOR CUTTING SOLID MATERIAL

AVAILABLE BLADE PITCHES						
Thickness (mm)	32 TPI	24 TPI	18 TPI	14 TPI	10-14 TPI Varipitch	10 TPI
2	3	2	1	1	1	1
5	6	5	4	3	2	2
10	13	9	7	6	5	4
15	19	14	11	8	7	6
20	25	19	14	11	9	8
25	31	24	18	14	12	10
30	38	28	21	17	14	12
35	44	33	25	19	17	14
40	50	38	28	22	19	16
45	57	43	32	25	21	18
50	63	47	35	28	24	20
55	69	52	39	30	26	22

The numbers in the coloured boxes indicates the actual number of teeth which will be in contact with the work

BLADE SELECTION		GENERAL RULE:
Pipe Diameter (mm)	CL75 on clamp	No less than 3 teeth in contact
50	200mm blade	Ideally between 6 & 12 teeth in contact
100	250mm blade	No more than 24 teeth in contact
150	300mm blade	

CL75 GENERAL PURPOSE CUTTING USING 12MM (1/2") WIDE CENGAR SHATTERPROOF BLADE		
Type	Length mm	TPI
Hand	300	14, 18, 24, 32
MC	220	10, 14, 18, 24

CL75 HEAVY STEEL SECTIONS UPTO 150MM DIA USING 19MM (3/4") WIDE SHATTERPROOF BLADES		
Type	Length mm	TPI
MB Blue for various steels	150, 200, 250	10/14, 18, 24
MB Blue for various steels	300	10/14, 14, 18
MBSS Silver for stainless steels	250, 300	18

The CL75 can be used with a clamp for pipe cutting. See cengar.com/portfolio/standard-clamp-kit

Visit our website www.cengar.com to view our range of blades, clamps and accessories.

DO'S & DON'TS

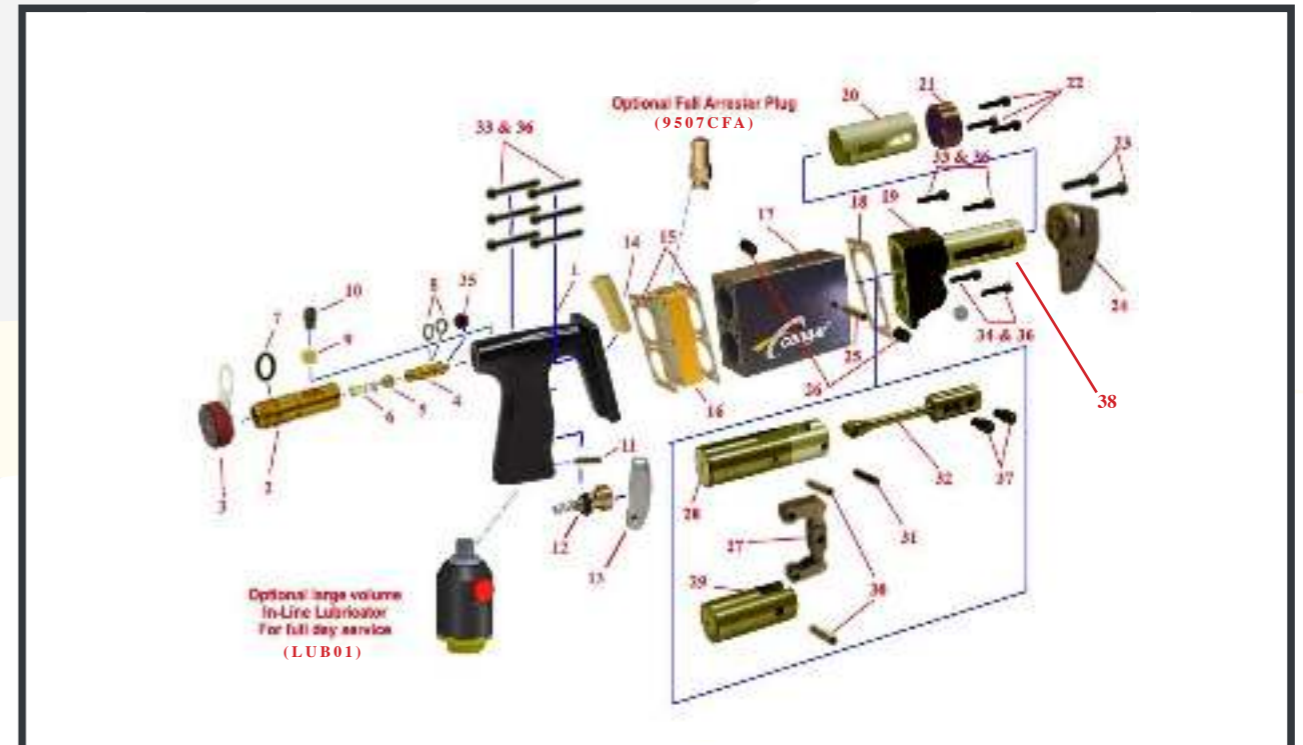
1. **ALWAYS** use Cengar green oil for best results. Keeping the saw clean and well oiled will give excellent reliability, and a long life.
 2. **ALWAYS** use Cengar Bi-Metal Shatterproof blades, for safety, and best cutting performance.
 3. **ALWAYS** isolate the air supply when changing blades.
 4. **ALWAYS** wear eye protection when using saws.
 5. **ALWAYS** keep the nosepiece hard against the work piece to prevent excessive vibration.
 6. **ALWAYS** isolate the machine when not in use.
 7. **ALWAYS** keep others away from the saw blade to prevent injury or trapping.
 8. **ALWAYS** have machines vibration tested annually to ensure exposure is kept to the minimum.
1. **NEVER** fit breakable "All-Hard" blades in Cengar saws, these can shatter causing injury to the operator and others.
 2. **NEVER** operate saw without wearing safety glasses.
 3. **NEVER** operate saw whilst you, or others are near the saw blade, which can cause serious injury or trapping.
 4. **NEVER** use excessive force because this may increase vibration above safe levels.
 5. **NEVER** hold the Cengar saw in a vice by the body. This will distort the bores, rendering the tool inoperative.
 6. **NEVER** screw nameplates to the body, as the screws may penetrate an airway or bore.
 7. **NEVER** operate the Cengar saw without lubrication.
 8. **NEVER** be tempted to clean internal parts with anything other than a clean lint free cloth or Cengar Green oil.
 9. **NEVER** modify Cengar saws or use non Cengar parts. This will invalidate ATEX approval and warranty.

CL50 & CL75 EXPLODED VIEW



ITEM	PART NO.	DESCRIPTION	NUMBER PER TOOL	ITEM	PART NO.	DESCRIPTION	NUMBER PER TOOL
1	9550	Handle	1	20	1144	Silencer Guard	1
2	9554	Isolator Body	1	21	1143A	Front End Cap	1
3	9553	Oil Cap & Retainer	1	22	54160	Front Cap Screws	3
4	9555	Isolator Nozzle	1	23	54160	Screws-Nosepiece	2
5	9559	Oil Control Ball	1	24	5045-5075	Nosepiece (1/2"-3/4")	1
6	9334A	Spring	1	25	1147	Centre Shaft	1
7	9561	'O' Ring Large	2	26	55516	Screws for Above	2
8	9560	'O' Ring Small	2	27	1150	Link to Pistons	1
9	9557	Detente Spring	1	28	1148	Top Piston	1
10	9556A	Lock Screw	1	29	1152	Bottom Piston	1
2 to 10	9552	Isolator Assembly		30	1147	Pin to Link	2
11	51834	Roll Pin-Trigger	2	31	1147	Pin to Pedestal	1
12	50034	Valve in Handle	1	32	1153-5	Pedestal	1
13	9502	Trigger	1	33	5540	Screw-Handle/Front	8
14	9506	Filter/Gauze	1	34	5520	Screw-Front Lower	2
15	9538	Gasket	2	35	9564	'O' Ring	1
16	1139	Valve Unit	1	36	W55	Serrated Washer	10
17	1141L	Body	1	37	5068	Screw-Blade Grip	2
18	1142	Gasket-Front End	1	38	-	Serial Number	-
19	1143	Front End Complete	1				

CL50FT & CL75FT EXPLODED VIEW



ITEM	PART NO.	DESCRIPTION	NUMBER PER TOOL	ITEM	PART NO.	DESCRIPTION	NUMBER PER TOOL
1	9550FT	Handle	1	20	1144	Silencer Guard	1
2	9554	Isolator Body	1	21	1143A	Front End Cap	1
3	9553	Oil Cap & Retainer	1	22	54160	Front Cap Screws	3
4	9555	Isolator Nozzle	1	23	54160	Screws-Nosepiece	2
5	9559	Oil Control Ball	1	24	5045-5075	Nosepiece (1/2"-3/4")	1
6	9334A	Spring	1	25	1147	Centre Shaft	1
7	9561	'O' Ring Large	2	26	55516	Screws for Above	2
8	9560	'O' Ring Small	2	27	1150	Link to Pistons	1
9	9557	Détente Spring	1	28	1148	Top Piston	1
10	9556A	Lock Screw	1	29	1152	Bottom Piston	1
2 to 10	9552	Isolator Assembly		30	1147	Pin to Link	2
11	51834	Roll Pin-Trigger	1	31	1147	Pin to Pedestal	1
12	50034	Valve in Handle	1	32	1153-5	Pedestal	1
13	9502FT	Trigger	1	33	5540	Screw-Handle/Front	8
14	9506	Filter/Gauze	1	34	5520	Screw-Front Lower	2
15	9538	Gasket	2	35	9564	'O' Ring	1
16	1139	Valve Unit	1	36	W55	Serrated Washer	10
17	1141L	Body	1	37	5068	Screw-Blade Grip	2
18	1142	Gasket-Front End	1	38	-	Serial Number	-
19	1143	Front End Complete	1				



SERVICE

We offer a full factory repair and refurbishment service for Cengar Saws, normally within 5 working days. Quotations at no charge can be given before work is carried out.

DISTRIBUTOR ADDRESS

TECHNISCH BUREAU

DUSPRA

www.duspra.nl

+31 (0) 180 410 100 | sales@duspra.nl

