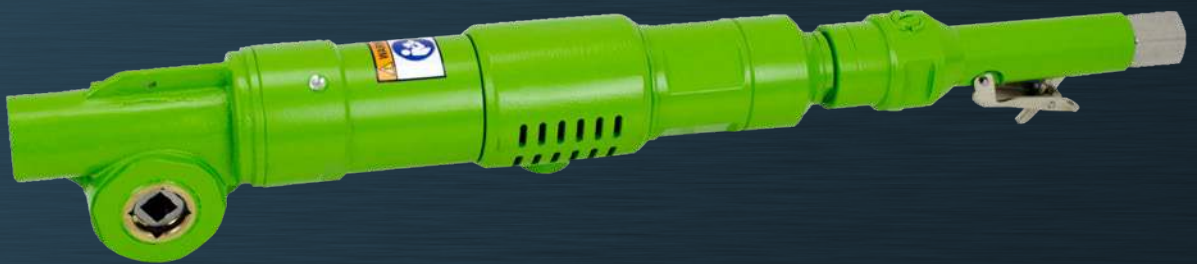




DRIVE UNITS

TOOLS FOR THE SPECIALIST



PNEUMATIC



HYDRAULIC



ATEX



SYSTEM CONCEPT



Eye-guide



Ball valve
with safety-lock



Twist throttle



ATEX-Safety class
approved (Type 2 2804)



Tool holder



Eye-guide



Tool holder



PNEUMATIC

The pneumatic drive unit with □ 28 mm tool holder and special eye-guidance.



ORDER NO.	ATEX Description	Tool holder (female)	Valve type	Power	Air consumption	Direction of rotation	Torque	Load speed	Noise level LpA	Vibration level	Weight	PNEUMATIC		OPERATING PRESSURE		ATEX	
												mm	kW	m³/min	Nm	rpm	dB(A)
2 2804 0010	II2GExhIBT6Gb	□28	Ball	4.00	4.00	left	1,800	20	86.4	<2.5	37.0						

Subject to technical change. Performance data at an operating pressure of 6 bar.

HYDRAULIC

The hydraulic drive unit with □ 28 mm tool holder and special eye-guidance.



ORDER NO.	ATEX Description	Tool holder (female)	Valve type	Power	Volume flow	Direction of rotation	Torque	Load speed	Noise level LpA	Vibration level	Weight	HYDRAULIC		OPERATING PRESSURE	
												mm	kW	l/min	Nm
2 2810 0010		□28	Twist	2.50	15-45	left	2,100	12	82.2	<2.5	34.7				

Subject to technical change. Performance data at an operating pressure of 120 bar.

HYDRAULIC

The hydraulic drive unit with □ 20 mm tool holder and special eye-guidance.



ORDER NO.	ATEX Description	Tool holder (female)	Valve type	Power	Volume flow	Direction of rotation	Torque	Load speed	Noise level LpA	Vibration level	Weight	HYDRAULIC		OPERATING PRESSURE	
												mm	kW	l/min	Nm
2 2090 0010		□20	Twist	1.10	15-50	left	510	20	<70.0	<2.5	15.2				

Subject to technical change. Performance data at an operating pressure of 70 bar.

TECHNICAL DATA

SYSTEM CONCEPT



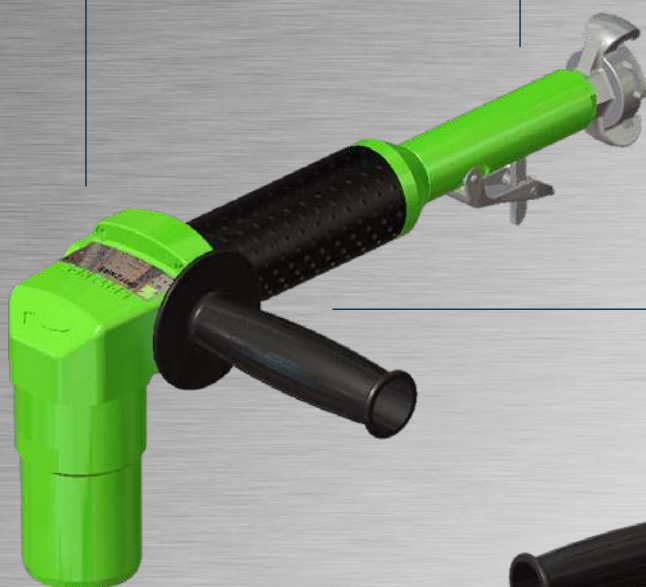
Angular gear



Lever valve with self lock



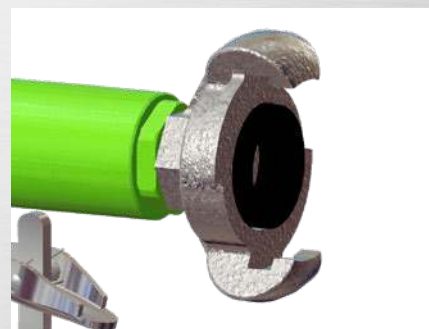
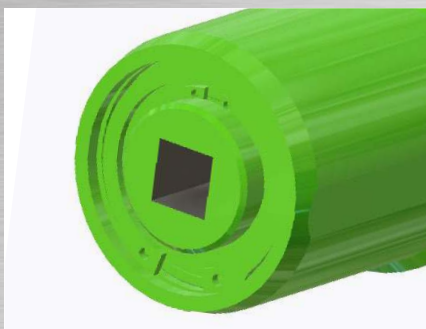
Exhaust sidewise



Tool holder



Second handle



Air connection

PNEUMATIC

The pneumatic drive unit with □ 13 mm tool holder.



ORDER NO.	⚠ ATEX Description	Tool holder (female)	PNEUMATIC		Air consumption	Direction of rotation	OPERATING PRESSURE 6 Bar		ATEX		Vibration level	Weight
			Valve type	Power			Torque	Load speed	Noise level LpA			
		mm		kW	m³/min		Nm	rpm	dB(A)	m/s²	kg	
2 2091 0010		□13	Lever	0.70	0.85	left	120	55	85.0	<2.5	3.8	

Subject to technical change.

Performance data at an operating pressure of 6 bar.

TECHNICAL DATA

SYSTEM CONCEPT



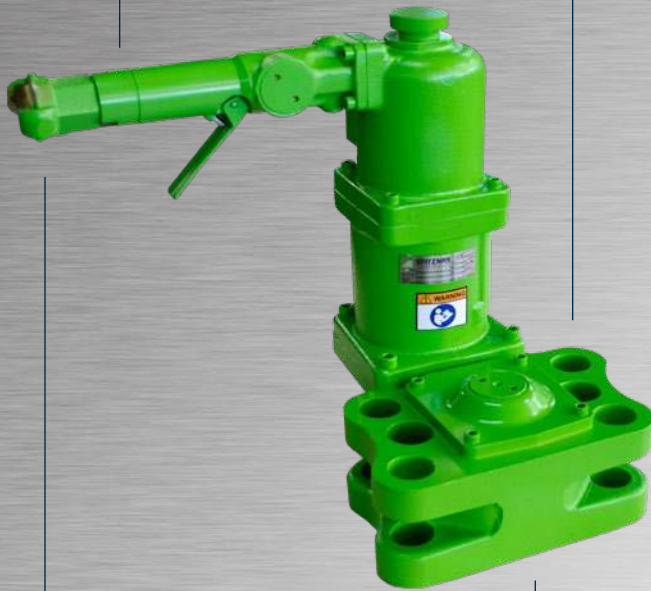
Safety lever valve with self-lock



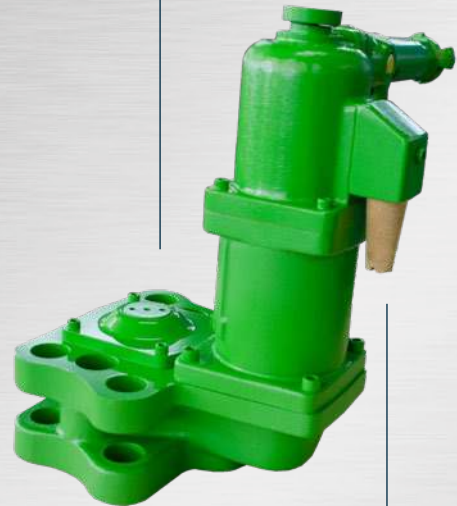
Mounting and guiding



Eye-guiding



ATEX-Safety class
approved (Type 3 6329 0010)



Air connection

Tool holder

Muffler



PNEUMATIC

The pneumatic drive unit with □ 20 mm tool holder and special eye-guidance.



PNEUMATIC



OPERATING PRESSURE

6 Bar

ATEX



ORDER NO.	ATEX Description	Tool holder (female)	Valve type	Power	Air consumption	Direction of rotation	Torque	Load speed	Noise level LpA	Vibration level	Weight
		mm		kW	m ³ /min		Nm	rpm	dB(A)	m/s ²	kg
3 6329 0010	II2GExhIIBT6Gb	□28 (20 ¹⁾)	Lever	1.25	1.70	left	630	20	85.4	<2.5	17.6
Subject to technical change.				¹⁾ with adapter			Performance data at an operating pressure of 6 bar.				

HYDRAULIC

The hydraulic drive unit with □ 28 (20¹⁾) mm tool holder.

¹⁾with adapter



HYDRAULIC



OPERATING PRESSURE

100 Bar

ORDER NO.	ATEX Description	Tool holder (female)	Valve type	Power	Volume flow	Direction of rotation	Torque	Load speed	Noise level LpA	Vibration level	Weight
		mm		kW	l/min		Nm	rpm	dB(A)	m/s ²	kg
3 6617 0010		□28 (20 ¹⁾)	Twist	1.80	15-50	left	820	20	76.0	<2.5	18.7
Subject to technical change.				¹⁾ with adapter			Performance data at an operating pressure of 100 bar.				

TECHNICAL DATA

SYSTEM CONCEPT



Handle
with sound absorber



Safety lever valve
or safety twist throttle



Air connection



ATEX-Safety class
approved



Tool holder



Direction of rotation right or reversible



Feed spindle with centering



PNEUMATIC

The pneumatic drill with feed spindle are available for different drilling diameter and speed, as well with direction of rotation right or reversible.



ORDER NO.	Ex ATEX Specification	Tool holder	Valve type	Direction of rotation	Max. drilling diameter in steel mm	Load speed rpm	Power kW	Air consumption m³/min	Noise level LpA dB(A)	Vibration level m/s²	Weight kg	PNEUMATIC		OPERATING PRESSURE 6 Bar		ATEX	
2 2080 0010	II2GExhIIBT6Gb	□ 20	Safety/lever valve	right	32.00	20	1.00	1.20	92.0	3.3	13.0						
2 2080 0030	II2GExhIIBT6Gb	□ 20	Safety/twist throttle	right	32.00	20	1.00	1.20	92.0	3.3	13.0						
2 2081 0010	II2GExhIIBT6Gb	□ 20	Safety/lever valve	right/left	32.00	20	1.00	1.20	92.0	3.3	13.0						
2 2081 0030	II2GExhIIBT6Gb	□ 20	Safety/twist throttle	right/left	32.00	20	1.00	1.20	92.0	3.3	13.0						
2 2083 0010	II2GExhIIBT6Gb	□ 20	Safety/lever valve	right/left	32.00	60	1.00	1.20	92.0	3.3	13.0						
2 2087 0010	II2GExhIIBT6Gb	□ 22	Safety/lever valve	right/left	32.00	40	1.00	1.20	92.0	3.3	13.0						
2 2087 0030	II2GExhIIBT6Gb	□ 22	Safety/twist throttle	right/left	32.00	40	1.00	1.20	92.0	3.3	13.0						
2 2088 0010	II2GExhIIBT6Gb	□ 22	Safety/lever valve	right/left	25.00	60	1.00	1.20	92.0	3.3	13.0						
2 2088 0030	II2GExhIIBT6Gb	□ 22	Safety/twist throttle	right/left	25.00	60	1.00	1.20	92.0	3.3	13.0						

Subject to technical change.

Performance data at an operating pressure of 6 bar.

TECHNICAL DATA

SYSTEM CONCEPT



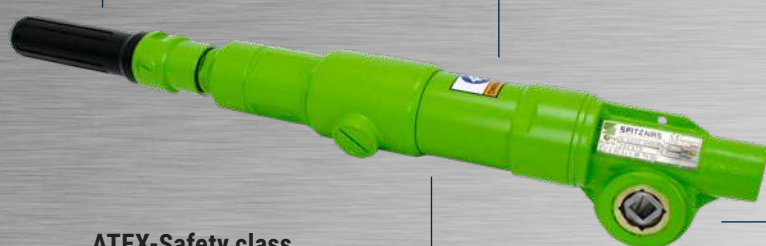
Twist throttle



Exhaust on side (rotatable)



Tool holder



ATEX-Safety class
approved (Type 3 6212 0050)



Twist throttle

Tool holder

Hydraulic connection



PNEUMATIC



The pneumatic drive units with □ 20 mm tool holder.

ORDER NO.	ATEX Description	Tool holder (female)	Valve type	Power	PNEUMATIC		OPERATING PRESSURE		ATEX	Noise level LpA	Vibration level	Weight
					6 Bar	6 Bar	6 Bar	6 Bar				
		mm		kW	m ³ /min	Nm	rpm	dB(A)	m/s ²	kg		
3 6212 0030 ¹⁾		□20	Twist	0.70	1.30	280	24	91.0	<2.5	6.2		
3 6212 0040 ²⁾		□20	Twist	0.70	1.30	280	24	91.0	<2.5	6.2		
3 6212 0050 ¹⁾	II2GExhIIBT6Gb	□20	Lever	0.70	1.30	230	35	91.0	<2.5	6.2		
6 1014 0050 ¹⁾	IM2ExhIMbT6	□20	Lever	0.70	1.30	66	100	89.0	<2.5	5.2		
6 1055 0010 ¹⁾	IM2ExhIMbT6	□20	Lever	0.70	1.30	280	22	80.5	<2.5	5.7		
6 1056 0010 ¹⁾	IM2ExhIMbT6	□20	Lever	0.70	1.30	92.7	67	80.5	<2.5	5.9		
6 1057 0010 ¹⁾	IM2ExhIMbT6	□20 (12)	Lever	0.70	1.30	50	125	80.5	<2.5	5.8		
6 1061 0010 ¹⁾	IM2ExhIMbT6	□22	Lever	0.70	1.30	280	22	80.5	<2.5	5.8		

Subject to technical change. ¹⁾free air outlet ²⁾with muffler Performance data at an operating pressure of 6 bar.

HYDRAULIC

The hydraulic drive units with □ 20 mm tool holder.



ORDER NO.	ATEX Description	Tool holder (female)	Valve type	Power	HYDRAULIC		OPERATING PRESSURE		Noise level LpA	Vibration level	Weight
					90-140 Bar	90-140 Bar	90-140 Bar	90-140 Bar			
		mm		kW	l/min	Nm	rpm	dB(A)	m/s ²	kg	
3 6242 0010	II2GExhIIBT4Gb	□20	Twist	1.00	20-50	500	20	<70.0	<2.5	10.0	
3 6243 0010	II2GExhIIBT4Gb	□20	Twist	1.60	20-50	160	95	<70.0	<2.5	10.0	

Subject to technical change. Performance data at an operating pressure of 90 bar.

REACTION BAR

The reaction bar is used as a torque support and will be mounted on the drive unit with a quick-release clamp system.



Illustrations can differ from the original

ORDER NO.	Description	Length [mm]	Clamping system
6 1014 9600	Reaction bar	280-354	Quick-release

TECHNICAL DATA

SYSTEM ACCESSORIES

SQUARE DRIVES

The square drives are available with different dimensions.



Type 3 6212, 6 1014, 6 1055-61



Type 3 6242-43



ORDER NO.	Pos.	Description	for machine adapter	Output
3 6212 7910	1	Square drive	□ 20 female	3/4" male
3 6339 4910	2	Square drive	□ 20 female	1/2" male
6 1015 7030	3	Square drive	□ 20 female	3/4" male
6 1016 7940	4	Square drive	□ 20 female	1" male
6 1018 7940	5	Square drive	□ 20 female	1/2" male
6 1017 7940	6	Square drive	□ 20 female	3/4" male

COVER

The cover is used to protect the drive and can be mounted on both sides of the drive unit.



ORDER NO.	Description
6 1055 9200	Cover

0721E